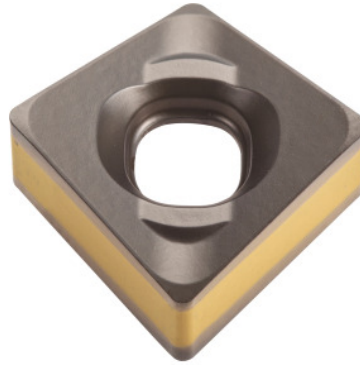


**XNMU 130608PNN-PL, IC845, Type: ST900****Order data**

|              |               |
|--------------|---------------|
| Order number | 227739 ST900  |
| GTIN         | 7291075311341 |
| Item class   | 19A           |

**Description****Version:**

Double-sided indexable insert with 8 helical cutting edges. Very robust design, special insert thickness. Very reliable process due to positive installation position in the insert seat. Excellent chip control and evacuation.

**Note:**

Standard application values for  $a_e$  max

The minimum order quantity corresponds to one pack unit quantity (VPE) or a multiple thereof.

**Technical description**

|                           |                   |
|---------------------------|-------------------|
| Corner radius             | 0.8 mm            |
| ISO code indexable insert | XNMU 130608PNN-PL |
| Series                    | HELISLOT          |
| Feed $f_z$                | 0.15 mm           |
| Type                      | ST900             |
| Geometry                  | PNN-PL            |

|                            |                              |
|----------------------------|------------------------------|
| Manufacturer's designation | XNMU 130608PNN-PL IC845      |
| Grade                      | IC845                        |
| Tool material              | Carbide                      |
| Number of changes/inserts  | 8                            |
| Type of product            | Indexable insert for milling |

### User data

|                                | Suitability                               | V <sub>c</sub> | ISO code |
|--------------------------------|---|----------------|----------|
| Steel < 500 N/mm <sup>2</sup>  | suitable                                  |                |          |
| Steel < 750 N/mm <sup>2</sup>  | suitable                                  | 180 m/min      | P        |
| Steel < 900 N/mm <sup>2</sup>  | suitable                                  | 160 m/min      | P        |
| Steel < 1100 N/mm <sup>2</sup> | suitable only under restricted conditions | 150 m/min      | P        |
| Steel < 1400 N/mm <sup>2</sup> | suitable only under restricted conditions | 140 m/min      | P        |
| wet maximum                    | suitable                                  |                |          |
| dry                            | suitable                                  |                |          |