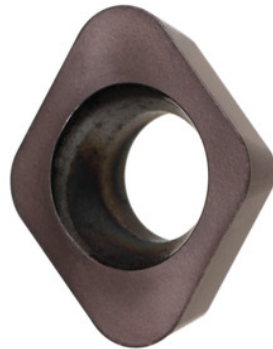


**Garant**
**XDHW 060210, HB7535, Type: UNI**


### Order data

Order number	211898 UNI
GTIN	4045197479655
Item class	21A

### Description

**Note:**

Standard application values for  $a_e = 0.3 \times D$  /  $a_p = 1.5$  mm.

### Technical description

Type	UNI
Corner radius	1 mm
ISO code indexable insert	XDHW 060210
Grade	HB7535
Tool material	Carbide
Type of product	Indexable insert for milling

### User data

	Suitability	$V_c$	ISO code
--	-------------	-------	----------

Steel < 500 N/mm <sup>2</sup>	suitable	240 m/min	P
Steel < 750 N/mm <sup>2</sup>	suitable	210 m/min	P
Steel < 900 N/mm <sup>2</sup>	suitable	180 m/min	P
INOX < 900 N/mm <sup>2</sup>	suitable	170 m/min	M
INOX > 900 N/mm <sup>2</sup>	suitable	120 m/min	M
Uni	suitable		
wet maximum	suitable only under restricted conditions		
dry	suitable		