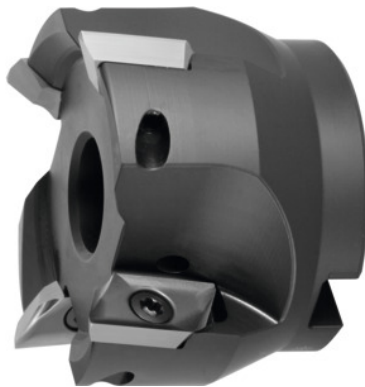




## Shoulder mill 90° 5720VZ16, with bore, $\varnothing D$ / number of teeth Z: 63/4mm



### Order data

Order number	220803 63/4
GTIN	2050002058293
Item class	28R

### Description

#### Version:

Milling body with plain shank, balanced to  $G = 6.3$  at 30,000 rpm. Shell-type milling cutters and milling cutters with modular interfaces have to be balanced together with their holder before use in high-speed copy milling. The design allows all radii of indexable inserts up to  $r_e=6.0\text{mm}$  to be mounted without modification to the milling head and without length correction.

### Technical description

Insert screw	229900 (TP20; 6.0 Nm)
Mounting bore $\varnothing$	22 mm
Overall length $L_{\text{tot}}$	45 mm
Cutting edge $\varnothing D_c$	63 mm
suitable indexable insert	ZD.. 16M5
maximum cutting depth $a_{p\text{max}}$	16 mm
Number of cutting edges Z	4
Ramping length L for $\alpha_{\text{max}}$	53.5 mm

Circular interpolation milling $\varnothing D_{\min}$	110 mm
Circular interpolation milling $a_p$	4 mm
Ramping angle $\alpha_{\max}$	2.68 degrees
Circular interpolation milling $\varnothing D_{\max}$	124 mm
$\varnothing D_3$	47 mm
Shank type	with bore
Setting angle $\kappa$	90 degrees
Milling application	Ramping
Milling application	End milling
Milling application	Circular milling
Through-coolant	yes
Type of product	End / face mill

---

## Accessories

Clamping screw	229900
----------------	--------