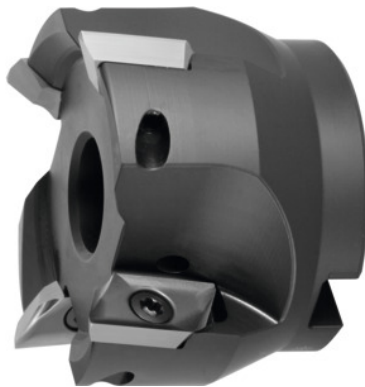




Shoulder mill 90° 5720VZ16, with bore, Ø D / number of teeth Z: 63/5mm



Order data

Order number	220803 63/5
GTIN	2050002058309
Item class	28R

Description

Version:

Milling body with plain shank, balanced to $G = 6.3$ at 30,000 rpm. Shell-type milling cutters and milling cutters with modular interfaces have to be balanced together with their holder before use in high-speed copy milling. The design allows all radii of indexable inserts up to $r_e=6.0\text{mm}$ to be mounted without modification to the milling head and without length correction.

Technical description

Insert screw	229900 (TP20; 6.0 Nm)
Overall length L_{tot}	45 mm
Mounting bore Ø	22 mm
suitable indexable insert	ZD.. 16M5
maximum cutting depth $a_{p\text{max}}$	16 mm
Cutting edge Ø D_c	63 mm
Number of cutting edges Z	5
Ramping length L for α_{max}	53.5 mm

Circular interpolation milling $\varnothing D_{\min}$	110 mm
Ramping angle α_{\max}	2.68 degrees
Circular interpolation milling a_p	4 mm
Circular interpolation milling $\varnothing D_{\max}$	124 mm
$\varnothing D_3$	47 mm
Shank type	with bore
Setting angle κ	90 degrees
Milling application	Ramping
Milling application	End milling
Milling application	Circular milling
Through-coolant	yes
Type of product	End / face mill

Accessories

Clamping screw	229900
----------------	--------