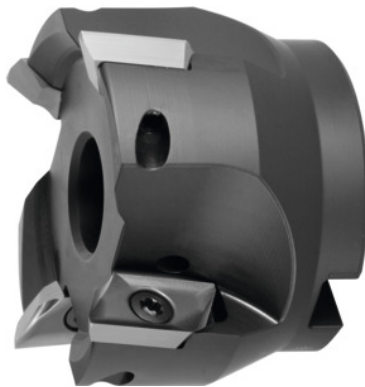




Shoulder mill 90° 5720VZ16, with bore, Ø D / number of teeth Z: 80/4mm



Order data

Order number	220803 80/4
GTIN	2050002058316
Item class	28R

Description

Version:

Milling body with plain shank, balanced to $G = 6.3$ at 30,000 rpm. Shell-type milling cutters and milling cutters with modular interfaces have to be balanced together with their holder before use in high-speed copy milling. The design allows all radii of indexable inserts up to $r_e=6.0\text{mm}$ to be mounted without modification to the milling head and without length correction.

Technical description

Mounting bore Ø	27 mm
Cutting edge Ø D_c	80 mm
maximum cutting depth $a_{p\text{max}}$	16 mm
Insert screw	229900 (TP20; 6.0 Nm)
Overall length L_{tot}	50 mm
suitable indexable insert	ZD.. 16M5
Number of cutting edges Z	4
Circular interpolation milling a_p	4 mm

Ramping length L for α_{\max}	70.5 mm
Circular interpolation milling $\varnothing D_{\max}$	158 mm
Ramping angle α_{\max}	2.03 degrees
Circular interpolation milling $\varnothing D_{\min}$	144 mm
$\varnothing D_3$	64 mm
Shank type	with bore
Setting angle κ	90 degrees
Milling application	Ramping
Milling application	End milling
Milling application	Circular milling
Through-coolant	yes
Type of product	End / face mill

Accessories

Clamping screw	229900
----------------	--------