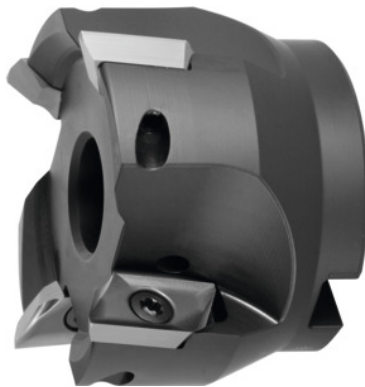




## Shoulder mill 90° 5720VZ16, with bore, Ø D / number of teeth Z: 50/3mm



### Order data

Order number	220803 50/3
GTIN	4059782502109
Item class	28R

### Description

#### Version:

Milling body with plain shank, balanced to  $G = 6.3$  at 30,000 rpm. Shell-type milling cutters and milling cutters with modular interfaces have to be balanced together with their holder before use in high-speed copy milling. The design allows all radii of indexable inserts up to  $r_e=6.0\text{mm}$  to be mounted without modification to the milling head and without length correction.

### Technical description

Mounting bore Ø	22 mm
Cutting edge Ø $D_c$	50 mm
Overall length $L_{tot}$	45 mm
suitable indexable insert	ZD.. 16M5
Insert screw	229900 (TP20; 6.0 Nm)
maximum cutting depth $a_{p,max}$	16 mm
Number of cutting edges Z	3
Circular interpolation milling $a_p$	4 mm

Ramping angle $\alpha_{\max}$	3.53 degrees
Circular interpolation milling $\varnothing D_{\max}$	98 mm
Ramping length L for $\alpha_{\max}$	40.5 mm
Circular interpolation milling $\varnothing D_{\min}$	84 mm
$\varnothing D_3$	34 mm
Shank type	with bore
Setting angle $\kappa$	90 degrees
Milling application	Ramping
Milling application	End milling
Milling application	Circular milling
Through-coolant	yes
Type of product	End / face mill

---

## Accessories

Clamping screw	229900
----------------	--------