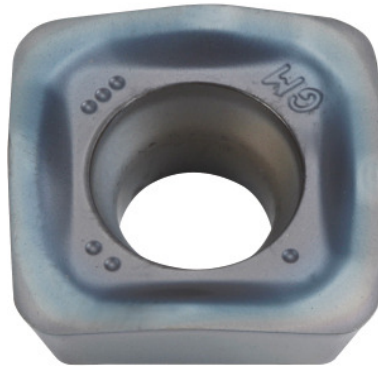


**SOMT....20ER-GM, PR1810, Type: 14****Order data**

Order number	222075 14
GTIN	4960664026944
Item class	25A

Description**Version:**

4-edge indexable inserts with convex cutting edges for low cutting forces.

Application:

FL geometry is the first choice for general machining.

Note:

Standard application values for $a_e = 0.3 \times D$.

Technical description

Feed f_z per tooth	0.5 – 2 mm
Indexable insert size	14
Programming radius at $a_{p,max}$	3.5 mm
Insert thickness E	5.56 mm
Type	GG
Corner radius	2 mm
ISO code indexable insert	SOMT140520-ER-GM

Grade	PR1810
Tool material	Carbide
Number of changes/inserts	4
Type of product	Indexable insert for milling

User data

	Suitability	V_c	ISO code
GG(G)	suitable	180 m/min	K
wet maximum	suitable only under restricted conditions		
dry	suitable		
Air	suitable		