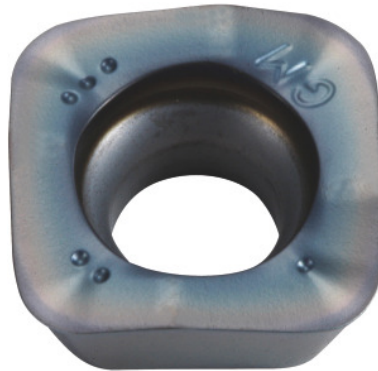



**SOMT....20ER-GM, PR1825, Type: 10**

**Order data**

Order number	222071 10
GTIN	4960664028511
Item class	25A

**Description**
**Version:**

4-edge indexable inserts with convex cutting edges for low cutting forces.

**Application:**

**FL geometry** is the first choice for general machining.

**Note:**

Standard application values for  $a_e = 0.3 \times D$ .

**Technical description**

Corner radius	2 mm
Type	ST1400
Indexable insert size	10
Insert thickness E	4.76 mm
Feed $f_z$ per tooth	0.2 – 2 mm
Programming radius at $a_{p\max}$	3 mm
ISO code indexable insert	SOMT100420ER-GM

Grade	PR1825
Tool material	Carbide
Number of changes/inserts	4
Type of product	Indexable insert for milling

### User data

	<b>Suitability</b>	<b>V<sub>c</sub></b>	<b>ISO code</b>
Steel < 500 N/mm <sup>2</sup>	suitable	200 m/min	P
Steel < 750 N/mm <sup>2</sup>	suitable	180 m/min	P
Steel < 900 N/mm <sup>2</sup>	suitable	160 m/min	P
Steel < 1100 N/mm <sup>2</sup>	suitable	140 m/min	P
Steel < 1400 N/mm <sup>2</sup>	suitable	100 m/min	P
wet maximum	suitable only under restricted conditions		
dry	suitable		
Air	suitable		