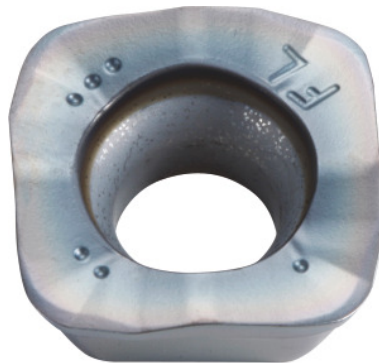



**SOMT.....ER-FL, PR1825, Type: 10**

**Order data**

|              |               |
|--------------|---------------|
| Order number | 222087 10     |
| GTIN         | 4960664028498 |
| Item class   | 25A           |

**Description**
**Version:**

4-edge indexable inserts with convex cutting edges for low cutting forces.

**Application:**

**FL geometry** (surface-oriented) is the first choice for roughing on lower-powered machines. Do not use for helical, plunging or contour milling, or on steep walls.

**Note:**

Standard application values for  $a_e = 0.3 \times D$ .

**Technical description**

|                                    |              |
|------------------------------------|--------------|
| Corner radius                      | 2 mm         |
| Indexable insert size              | 10           |
| Feed $f_z$ per tooth               | 0.2 – 1.2 mm |
| Type                               | ST1400       |
| Insert thickness E                 | 4.76 mm      |
| Programming radius at $a_{p \max}$ | 3 mm         |

|                           |                              |
|---------------------------|------------------------------|
| ISO code indexable insert | SOMT100420-ER-FL             |
| Grade                     | PR1825                       |
| Tool material             | Carbide                      |
| Number of changes/inserts | 4                            |
| Type of product           | Indexable insert for milling |

### User data

|                                | Suitability                               | $V_c$     | ISO code |
|--------------------------------|---|-----------|----------|
| Steel < 500 N/mm <sup>2</sup>  | suitable                                  | 200 m/min | P        |
| Steel < 750 N/mm <sup>2</sup>  | suitable                                  | 180 m/min | P        |
| Steel < 900 N/mm <sup>2</sup>  | suitable                                  | 160 m/min | P        |
| Steel < 1100 N/mm <sup>2</sup> | suitable                                  | 140 m/min | P        |
| Steel < 1400 N/mm <sup>2</sup> | suitable                                  | 100 m/min | P        |
| wet maximum                    | suitable only under restricted conditions |           |          |
| dry                            | suitable                                  |           |          |
| Air                            | suitable                                  |           |          |