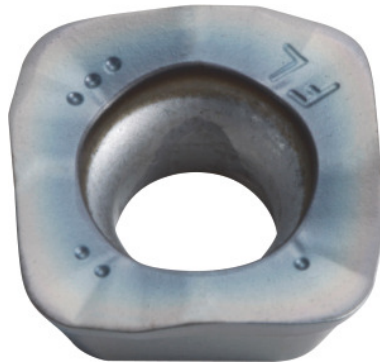



**SOMT.....ER-FL, PR1835, Type: 14**

**Order data**

Order number	222089 14
GTIN	4960664029372
Item class	25A

**Description**
**Version:**

4-edge indexable inserts with convex cutting edges for low cutting forces.

**Application:**

**FL geometry** (surface-oriented) is the first choice for roughing on lower-powered machines. Do not use for helical, plunging or contour milling, or on steep walls.

**Note:**

Standard application values for  $a_e = 0.3 \times D$ .

**Technical description**

Programming radius at $a_{p \max}$	3 mm
Insert thickness E	556 mm
Corner radius	14 mm
Indexable insert size	14
Feed $f_z$ per tooth	0.5 – 1.8 mm
Type	INOX

ISO code indexable insert	SOMT140514-ER-FL
Grade	PR1835
Tool material	Carbide
Number of changes/inserts	4
Type of product	Indexable insert for milling

### User data

	Suitability	V <sub>c</sub>	ISO code
INOX < 900 N/mm <sup>2</sup>	suitable	160 m/min	M
INOX > 900 N/mm <sup>2</sup>	suitable	120 m/min	M
Ti > 850 N/mm <sup>2</sup>	suitable	40 m/min	S
wet maximum	suitable only under restricted conditions		
dry	suitable		
Air	suitable		