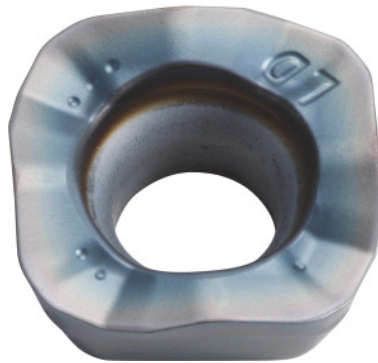



**SOMT....20ER-LD, PR1810, Type: 10**

**Order data**

Order number	222083 10
GTIN	4960664026913
Item class	25A

**Description**
**Version:**

4-edge indexable inserts with convex cutting edges for low cutting forces.

**Application:**

**LD geometry** is also suitable for high cutting depths ( $a_{p,max} = 5$  mm) at moderate feed rates. Do not use for helical, plunging or contour milling, or on steep walls.

**Note:**

Standard application values for  $a_e = 0.3 \times D$ .

**Technical description**

Corner radius	2 mm
Feed $f_z$ per tooth	0.06 – 2 mm
Indexable insert size	10
Type	GG
Insert thickness E	4.76 mm
Programming radius at $a_{p,max}$	3.5 mm

ISO code indexable insert	SOMT100420-ER-LD
Grade	PR1810
Tool material	Carbide
Number of changes/inserts	4
Type of product	Indexable insert for milling

### User data

	Suitability	$V_c$	ISO code
GG(G)	suitable	180 m/min	K
wet maximum	suitable only under restricted conditions		
dry	suitable		
Air	suitable		