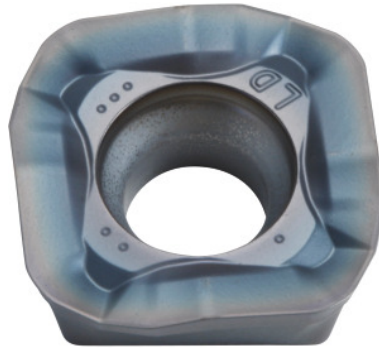


**SOMT....20ER-LD, PR1825, Type: 14****Order data**

Order number	222079 14
GTIN	4960664028566
Item class	25A

Description**Version:**

4-edge indexable inserts with convex cutting edges for low cutting forces.

Application:

LD geometry is also suitable for high cutting depths ($a_{p\max} = 5$ mm) at moderate feed rates.

Do not use for helical, plunging or contour milling, or on steep walls.

Note:

Standard application values for $a_e = 0.3 \times D$.

Technical description

Feed f_z per tooth	0.03 – 2 mm
Insert thickness E	5.56 mm
Indexable insert size	14
Corner radius	2 mm
Programming radius at $a_{p\max}$	5 mm
ISO code indexable insert	SOMT140520ER-LD
Grade	PR1825

Tool material	Carbide
Number of changes/inserts	4
Type of product	Indexable insert for milling

User data

	Suitability	V _c	ISO code
Steel < 500 N/mm ²	suitable	200 m/min	P
Steel < 750 N/mm ²	suitable	180 m/min	P
Steel < 900 N/mm ²	suitable	160 m/min	P
Steel < 1100 N/mm ²	suitable	140 m/min	P
Steel < 1400 N/mm ²	suitable	100 m/min	P
wet maximum	suitable only under restricted conditions		
dry	suitable		
Air	suitable		