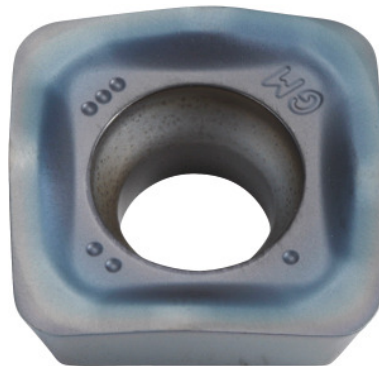



SOMT....20ER-GM, PR1835, Type: 14

Order data

Order number	222073 14
GTIN	4960664029396
Item class	25A

Description
Version:

4-edge indexable inserts with convex cutting edges for low cutting forces.

Application:

FL geometry is the first choice for general machining.

Note:

Standard application values for $a_e = 0.3 \times D$.

Technical description

Feed f_z per tooth	0.5 – 1.8 mm
Insert thickness E	5.56 mm
Type	INOX
Indexable insert size	14
Programming radius at $a_{p,max}$	3.5 mm
Corner radius	2 mm
ISO code indexable insert	SOMT140520-ER-GM

Grade	PR1835
Tool material	Carbide
Number of changes/inserts	4
Type of product	Indexable insert for milling

User data

	Suitability	V_c	ISO code
INOX < 900 N/mm ²	suitable	160 m/min	M
INOX > 900 N/mm ²	suitable	120 m/min	M
Ti > 850 N/mm ²	suitable	40 m/min	S
wet maximum	suitable only under restricted conditions		
dry	suitable		
Air	suitable		