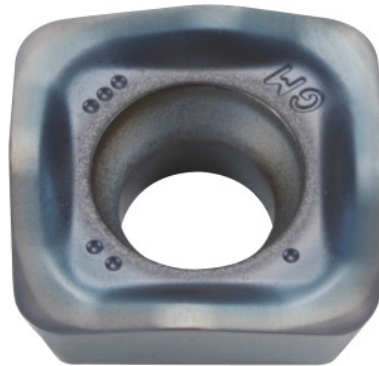



SOMT....20ER-GM, PR1825, Type: 14

Order data

Order number	222071 14
GTIN	4960664028559
Item class	25A

Description
Version:

4-edge indexable inserts with convex cutting edges for low cutting forces.

Application:

FL geometry is the first choice for general machining.

Note:

Standard application values for $a_e = 0.3 \times D$.

Technical description

Type	ST1400
Feed f_z per tooth	0.2 – 2 mm
Insert thickness E	5.56 mm
Programming radius at $a_{p\max}$	3.5 mm
Indexable insert size	14
Corner radius	2 mm
ISO code indexable insert	SOMT140520-ER-GM

Grade	PR1825
Tool material	Carbide
Number of changes/inserts	4
Type of product	Indexable insert for milling

User data

	Suitability	V_c	ISO code
Steel < 500 N/mm ²	suitable	200 m/min	P
Steel < 750 N/mm ²	suitable	180 m/min	P
Steel < 900 N/mm ²	suitable	160 m/min	P
Steel < 1100 N/mm ²	suitable	140 m/min	P
Steel < 1400 N/mm ²	suitable	100 m/min	P
wet maximum	suitable only under restricted conditions		
dry	suitable		
Air	suitable		