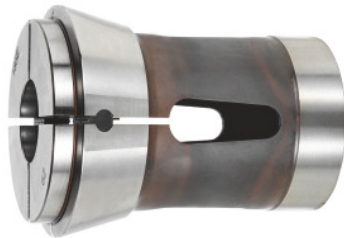




Push-out collet, round, to DIN 6343, 185 E, Clamping Ø: 22mm



Order data

Order number	329565 22
GTIN	4067263115700
Item class	32Z

Description

Version:

Collets, **round profile in 1 mm increments. Please specify required clamping Ø with order.**

Standard:

DIN 6343

Accuracy:

Concentricity tolerances: D = 1 to 10 mm = 0.02 mm D = 10 to 30 mm = 0.03 mm D = 30 to 60 mm = 0.04 mm

Note:

Other diameters and profiles (e.g. square or hexagon) **on request!**

Profile Ø 4.0 – 8.0 mm smooth. From Ø 9.0 mm with transverse serrations.

Technical description

K	84 mm
A	73 mm
Angle α	20 degrees
F	66 mm
Overall length L	110 mm
Type	185 E

Type of product

Collet