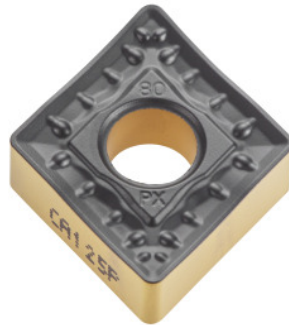



**CNMM 120412, Grade: CA125P**

**Order data**

Order number	250492 CA125P
GTIN	4960664013999
Item class	25E

**Technical description**

Corner radius	1.2 mm
Number of changes/inserts	4
Main application	P
Tool material	Carbide
Cutting conditions	slightly interrupted
Cutting speed $v_c$ main application	140 - 300 m/min
Cutting depth $a_p$	1 - 11 mm
Chip breaker	PX
Finishing/roughing assignment	Roughing
ISO code indexable insert	CNMM 120412
Grade	CA125P
Feed $f$	0.25 - 0.9 mm/rev.

Type of product

Indexable insert for turning