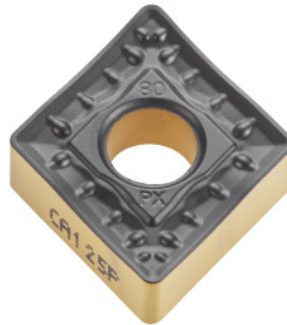



**CNMM 190616, Grade: CA125P**

**Order data**

Order number	250504 CA125P
GTIN	4960664014842
Item class	25E

**Technical description**

Cutting depth $a_p$	1 - 11 mm
ISO code indexable insert	CNMM 190616
Cutting speed $v_c$ main application	140 - 300 m/min
Tool material	Carbide
Main application	P
Feed $f$	0.25 - 0.9 mm/rev.
Cutting conditions	slightly interrupted
Number of changes/inserts	4
Chip breaker	PX
Grade	CA125P
Finishing/roughing assignment	Roughing
Corner radius	1.6 mm

Type of product

Indexable insert for turning