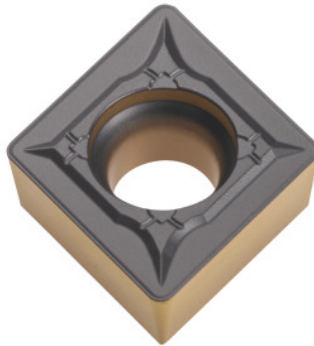


**CCMT 120408, Grade: CA115P****Order data**

|              |               |
|--------------|---------------|
| Order number | 260204 CA115P |
| GTIN         | 4960664045365 |
| Item class   | 25E           |

**Technical description**

|                                      |                   |
|--------------------------------------|-------------------|
| Grade                                | CA115P            |
| Cutting conditions                   | continuous        |
| Tolerance                            | M                 |
| Number of changes/inserts            | 2                 |
| Finishing/roughing assignment        | Finishing         |
| Cutting depth $a_p$                  | 0.5 - 3 mm        |
| Chip breaker                         | GK                |
| Feed $f$                             | 0.1 - 0.3 mm/rev. |
| Main application                     | P                 |
| Cutting speed $v_c$ main application | 90 - 340 m/min    |
| ISO code indexable insert            | CCMT 120408       |
| Corner radius                        | 0.8 mm            |

|                 |                              |
|-----------------|------------------------------|
| Tool material   | Carbide                      |
| Type of product | Indexable insert for turning |