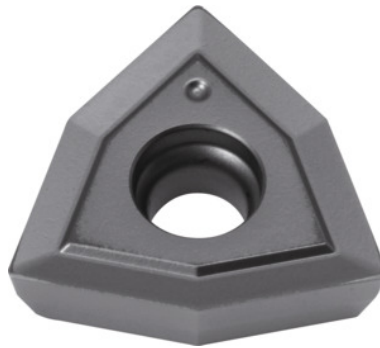



KOMET® Unisix® indexable insert, BK2730, Designation type W29: 10-200

Order data

Order number	237080 10-200
GTIN	4047109101012
Item class	24T

Description
Suitable for :

No. 236630; 236635; 236650

Note:

The standard application values refer to the KUB Trigon®.

Type: INOX

ISO code indexable insert: WOEX 030204

Feed f in steel $< 900 \text{ N/mm}^2$: 0.08 mm/rev.

Technical description

Designation	10-200
Feed f in steel $< 900 \text{ N/mm}^2$	0.08 mm/rev.
ISO code indexable insert	WOEX 030204
Grade	BK2730
Type	INOX
Tool material	Carbide
Type of product	Indexable insert for drilling

User data

	Suitability	V_c	ISO code
INOX < 900 N/mm ²	suitable	160 m/min	M
INOX > 900 N/mm ²	suitable	160 m/min	M
Ti > 850 N/mm ²	suitable	80 m/min	S
wet maximum	suitable		