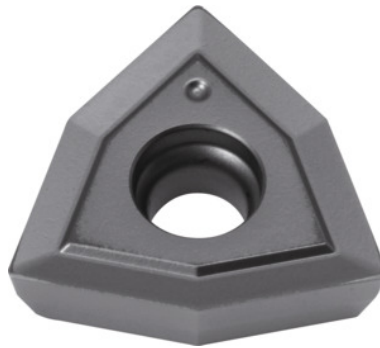



**KOMET® Unisix® indexable insert, BK2730, Designation type W29: 34-200**

**Order data**

Order number	237080 34-200
GTIN	4047109101043
Item class	24T

**Description**
**Suitable for :**

No. 236650; 236660; 236685; 236686

**Note:**

**The standard application values refer to the KUB Trigon®.**

Type: INOX

ISO code indexable insert: WOEX 06T304

Feed  $f$  in steel  $< 900 \text{ N/mm}^2$ : 0.15 mm/rev.

**Technical description**

Designation	34-200
Feed $f$ in steel $< 900 \text{ N/mm}^2$	0.15 mm/rev.
ISO code indexable insert	WOEX 06T304
Grade	BK2730
Type	INOX
Tool material	Carbide
Type of product	Indexable insert for drilling

**User data**

	<b>Suitability</b>	<b>V<sub>c</sub></b>	<b>ISO code</b>
INOX < 900 N/mm <sup>2</sup>	suitable	160 m/min	M
INOX > 900 N/mm <sup>2</sup>	suitable	160 m/min	M
Ti > 850 N/mm <sup>2</sup>	suitable	80 m/min	S
wet maximum	suitable		