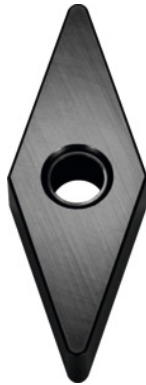



**VNGA 160408, PT600M, Application range: GG**

**Order data**

|              |               |
|--------------|---------------|
| Order number | 255857 GG     |
| GTIN         | 4960664546688 |
| Item class   | 25F           |

**Description**
**Version:**

**MEGACOAT** coated ceramic inserts.

Grade: PT600M

Chamfer: T02025

Cutting depth  $a_p$ : 0.5 - 2.5 mm

Feed  $f$ : 0.15 - 0.4 mm/rev.

Cutting speed  $v_c$  main application: 150 - 550 m/min

**Technical description**

|                     |                     |
|---------------------|---------------------|
| Cutting depth $a_p$ | 0.5 - 2.5 mm        |
| Feed $f$            | 0.15 - 0.4 mm/rev.  |
| Corner radius       | 0.8 mm              |
| Application range   | GG                  |
| Cutting conditions  | continuous          |
| Cutting conditions  | heavily interrupted |

|                                      |                                    |
|--------------------------------------|------------------------------------|
| Cutting conditions                   | slightly interrupted               |
| Chamfer                              | T02025                             |
| Cutting speed $v_c$ main application | 150 - 550 m/min                    |
| Grade                                | PT600M                             |
| Finishing/roughing assignment        | Skrubbearbejdning-sletbearbejdning |
| Tool material                        | Ceramic                            |
| ISO code indexable insert            | VNGA 160408                        |
| Number of changes/inserts            | 4                                  |
| Product name attribute               | PT600M                             |
| Type of product                      | Indexable insert for turning       |