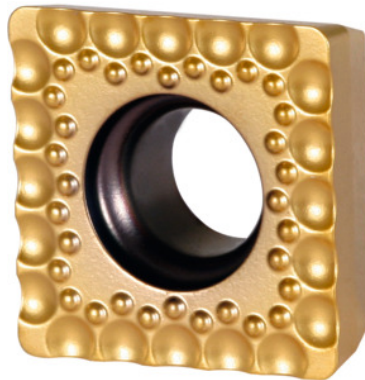



KOMET® indexable insert, BK8430, Designation type W83: 13-030

Order data

Order number	236535 13-030
GTIN	4047109199842
Item class	24Q

Description
Version:

Ground on the circumference, with rounded cutting edge and sintered chip breaker.

Note:

Application values refer to the KUB Quatron® 235500 – 235505.

When using the KUB Quatron® 235500 – 235505 please halve the feed rate values.

Type: ST1400

ISO code indexable insert: SOEX 050204

Feed f in steel $< 900 \text{ N/mm}^2$: 0.12 mm/rev.

Technical description

Designation	13-030
Feed f in steel $< 900 \text{ N/mm}^2$	0.12 mm/rev.
ISO code indexable insert	SOEX 050204
Series	KUB Quatron®
Number of changes/inserts	4

Grade	BK8430
Type	ST1400
Tool material	Carbide
Type of product	Indexable insert for drilling

User data

	Suitability	V_c	ISO code
Steel < 500 N/mm ²	suitable	300 m/min	P
Steel < 750 N/mm ²	suitable	250 m/min	P
Steel < 900 N/mm ²	suitable	200 m/min	P
Steel < 1100 N/mm ²	suitable	160 m/min	P
Steel < 1400 N/mm ²	suitable	130 m/min	P
INOX < 900 N/mm ²	suitable only under restricted conditions	160 m/min	M
INOX > 900 N/mm ²	suitable only under restricted conditions	160 m/min	M
wet maximum	suitable		