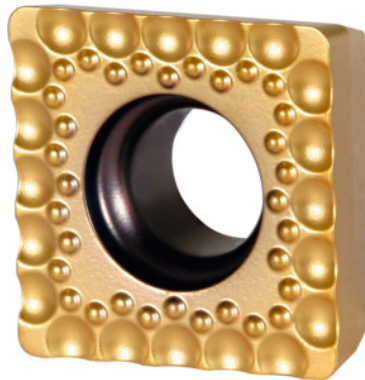



**KOMET® indexable insert, BK8430, Designation type W83: 23-030**

**Order data**

Order number	236535 23-030
GTIN	4047109199811
Item class	24Q

**Description**
**Version:**

Ground on the circumference, with rounded cutting edge and sintered chip breaker.

**Note:**

**Application values refer to the KUB Quatron® 235500 – 235505.**

When using the KUB Quatron® 235500 – 235505 please halve the feed rate values.

Type: ST1400

ISO code indexable insert: SOEX 07T308

Feed  $f$  in steel  $< 900 \text{ N/mm}^2$ : 0.16 mm/rev.

**Technical description**

Designation	23-030
Feed $f$ in steel $< 900 \text{ N/mm}^2$	0.16 mm/rev.
ISO code indexable insert	SOEX 07T308
Number of changes/inserts	4
Grade	BK8430

Type	ST1400
Tool material	Carbide
Type of product	Indexable insert for drilling

### User data

	Suitability	V <sub>c</sub>	ISO code
Steel < 500 N/mm <sup>2</sup>	suitable	300 m/min	P
Steel < 750 N/mm <sup>2</sup>	suitable	250 m/min	P
Steel < 900 N/mm <sup>2</sup>	suitable	200 m/min	P
Steel < 1100 N/mm <sup>2</sup>	suitable	160 m/min	P
Steel < 1400 N/mm <sup>2</sup>	suitable	130 m/min	P
INOX < 900 N/mm <sup>2</sup>	suitable only under restricted conditions	160 m/min	M
INOX > 900 N/mm <sup>2</sup>	suitable only under restricted conditions	160 m/min	M
wet maximum	suitable		