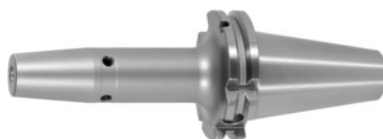




Shrink-fit chuck, SK 50 short, Clamping range Ø D1: 6mm



Order data

Order number	302288 6
GTIN	2050001689917
Item class	33W

Description

Version:

- **High-temperature steel.**
- **Size 3 -5 for carbide, from size 6 for HSS and carbide.**
- **All shanks hard turned (for smooth running!).**
- **With RFID/Balluffchip bore.**

Glass bead blasted.

Application:

For clamping tools with parallel shank to h6 tolerance.

Suitable for inductive, contact and hot-air shrink units.

Optional extras:

Pull studs (PS) No. 308600 – 308800. PS wrenches No. 308820 – 308835, Shrink-fit chuck extensions No. 302410 – 302419. Shrink-fit units, accessories No. 354210 – 354450, balancing screws set No. 309906 size 180.

Technical description

Clamping Ø D ₁	6 mm
Ø D ₂	21 mm
Overhang dimension A	80 mm
External Ø D	27 mm
Adapter	SK 50 short
Arbor standard	ISO 7388-1

Shape	ADB
Balance quality G at rotational speed	G 2.5 at 25,000 rpm
Concentricity	$\leq 3 \mu\text{m}$
Machining strategy	HSC
Machining strategy	HPC
Type of product	Shrink-fit chuck

Suitable products

<https://www.hoffmann-group.com/GB/en/hom/p/302288-6>