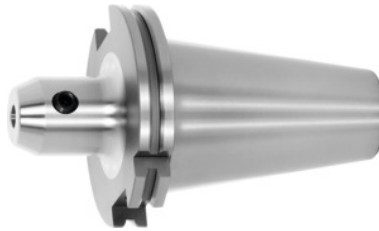


Garant
Side lock arbor Form ADB, SK 50 short, Clamping range \varnothing D1: 12mm

Order data

Order number	300295 12
GTIN	4045197283900
Item class	31A

Description
Version:

With Balluff/RFID chip bore.

GARANT –

All shanks hard turned (for smooth cutting action!). Balancing quality G 2.5 / G 25,000 rpm

Application:

For clamping tools with side flat to DIN 1835 B and DIN 6535 HB.

Optional extras:

Pull studs (PS) No. 308600 – 308806. Pull stud wrenches No. 308820; 308835.

Technical description

Spare clamping screw No. 30 9900	12
Clamping \varnothing D ₁	12 mm
Overhang dimension A	63 mm
External \varnothing D	42 mm
Adapter	SK 50 short
Standard	DIN 6359
Arbor standard	ISO 7388-1
Shape	ADB

Balance quality G at rotational speed	G 2.5 at 25,000 rpm
Concentricity	≤ 3 μm
Machining strategy	HPC
Type of product	Side lock arbor

Accessories

Pull stud 60°sealed suitable for steep tapers 50	308785 50
Pull studsealed, form A suitable for steep tapers 50	308610 50
Wrench for pull studsISO 7388 suitable for ISO taper size 50	308830 50
Pull studForm B suitable for steep tapers 50	308640 50
Pull stud, 18CrNiMo7Form A suitable for steep tapers 50	308605 50
Pull studsealed suitable for steep tapers 50	308660 50
Pull stud 45°sealed suitable for steep tapers 50	308765 50
Pull stud 90°sealed suitable for steep tapers 50	308795 50
Pull stud 90°sealed suitable for steep tapers 50	308790 50
Wrench for pull studsDIN ISO 7388-1 (formerly DIN 69872) suitable for ISO taper size 50	308820 50
Special pull stud with internal thread suitable for steep tapers 50	308740 50
Pull studsealed, form B suitable for steep tapers 50	308650 50
Pull stud 45°sealed suitable for steep tapers 50	308760 50
Pull studsealed, form B suitable for steep tapers 50	308620 50
Pull stud, 18CrNiMo7sealed, form B suitable for steep tapers 50	308615 50
Pull studForm A suitable for steep tapers 50	308600 50
Special pull stud with no internal threadsealed suitable for steep tapers 50	308720 50
Spare clamping screw for chucks with clamping Ø D1 12 mm	309900 12