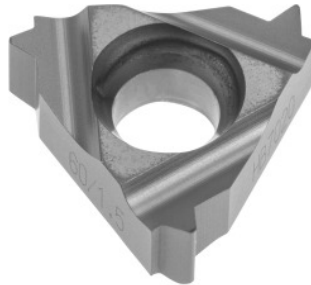


**Garant****Full profile insert 60°, internal, right-hand, HB7020, Pitch: 1 mm****Order data**

Order number	270754 1
GTIN	4045197369987
Item class	21J

**Description****Version:**

**Full profile insert 60°** for internal threads to DIN / ISO R 262 (DIN 13) tolerance class 6H.

**Technical description**

Tool material	Carbide
Thread pitch	1 mm
Internal/external application	inner
Application type	right-hand
Indexable insert profile	Full profile
Grade	HB7020
Tolerance class	DIN 13 6H
Thread type	M
Thread type	MF
Thread type	MF-LH

Thread type	M-LH
Flank angle	60 degrees
Thickness	3.17 mm
Insert size L	11 mm
Type of product	Indexable insert for thread turning

### User data

	Suitability	V <sub>c</sub>	ISO code
Aluminium (short chipping)	suitable only under restricted conditions	200 m/min	N
Alu > 10% Si	suitable only under restricted conditions	180 m/min	N
Steel < 500 N/mm <sup>2</sup>	suitable only under restricted conditions	160 m/min	P
Steel < 750 N/mm <sup>2</sup>	suitable	160 m/min	P
Steel < 900 N/mm <sup>2</sup>	suitable	120 m/min	P
Steel < 1100 N/mm <sup>2</sup>	suitable	90 m/min	P
Steel < 1400 N/mm <sup>2</sup>	suitable only under restricted conditions	70 m/min	P
Steel < 55 HRC	suitable only under restricted conditions	30 m/min	H
INOX < 900 N/mm <sup>2</sup>	suitable only under restricted conditions	90 m/min	M
INOX > 900 N/mm <sup>2</sup>	suitable only under restricted conditions	90 m/min	M
Ti > 850 N/mm <sup>2</sup>	suitable only under restricted conditions	50 m/min	S
GG(G)	suitable	120 m/min	K
CuZn	suitable only under restricted conditions	120 m/min	N
continuous	suitable only under restricted conditions		

irregular	suitable
interrupted	suitable
wet maximum	suitable
dry	suitable only under restricted conditions