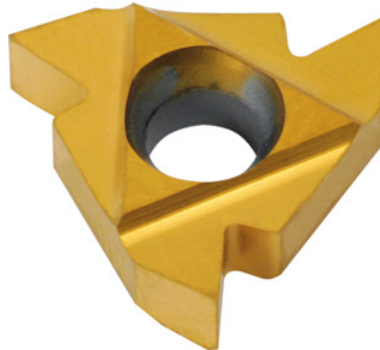


**Garant****Partial profile insert 60°, external, left-hand, HB7010, Pitch: 0,5-1,5mm****Order data**

Order number	270745 0,5-1,5
GTIN	4045197367600
Item class	21J

**Description****Version:****Partial profile insert 60°** for external threads.**Technical description**

Tool material	Carbide
maximum thread pitch	1.5 mm
Thread pitch	0.5 mm
Internal/external application	external
Application type	left-hand
Indexable insert profile	Partial profile
Grade	HB7010
Tolerance class	DIN 13 6g
Thread type	M-LH
Thread type	MF-LH

Thread type	M
Thread type	MF
Flank angle	60 degrees
Thickness	3.6 mm
Insert size L	16 mm
Type of product	Indexable insert for thread turning

### User data

	Suitability	V <sub>c</sub>	ISO code
Aluminium (short chipping)	suitable	250 m/min	N
Alu > 10% Si	suitable	180 m/min	N
Steel < 500 N/mm <sup>2</sup>	suitable	150 m/min	P
Steel < 750 N/mm <sup>2</sup>	suitable	150 m/min	P
Steel < 900 N/mm <sup>2</sup>	suitable	130 m/min	P
Steel < 1100 N/mm <sup>2</sup>	suitable	100 m/min	P
Steel < 1400 N/mm <sup>2</sup>	suitable	90 m/min	P
Steel < 55 HRC	suitable only under restricted conditions	40 m/min	H
INOX < 900 N/mm <sup>2</sup>	suitable only under restricted conditions	100 m/min	M
INOX > 900 N/mm <sup>2</sup>	suitable only under restricted conditions	100 m/min	M
Ti > 850 N/mm <sup>2</sup>	suitable only under restricted conditions	50 m/min	S
GG(G)	suitable	130 m/min	K
CuZn	suitable only under restricted conditions	150 m/min	N
continuous	suitable		
wet maximum	suitable		

dry

suitable only under  
restricted conditions