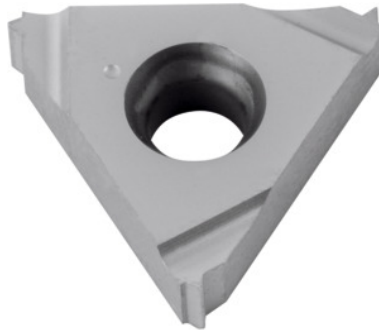


**Garant****Full profile insert 60°, internal, right-hand, HB7125, Pitch: 3,5mm**

## Order data

|              |               |
|--------------|---------------|
| Order number | 270759 3,5    |
| GTIN         | 4045197453235 |
| Item class   | 21J           |

## Description

**Version:****Full profile insert 60°** for internal threads to DIN / ISO R 262 (DIN 13) tolerance class 6H.

## Technical description

|                               |              |
|-------------------------------|--------------|
| Tool material                 | Carbide      |
| Thread pitch                  | 3.5 mm       |
| Application type              | right-hand   |
| Internal/external application | inner        |
| Indexable insert profile      | Full profile |
| Grade                         | HB7125       |
| Tolerance class               | DIN 13 6H    |
| Thread type                   | M            |
| Thread type                   | MF           |
| Thread type                   | MF-LH        |

|                 |                                     |
|-----------------|-------------------------------------|
| Thread type     | M-LH                                |
| Flank angle     | 60 degrees                          |
| Thickness       | 3.6 mm                              |
| Insert size L   | 16 mm                               |
| Type of product | Indexable insert for thread turning |

### User data

|                              | Suitability | V <sub>c</sub> | ISO code |
|------------------------------|-------------|----------------|----------|
| INOX < 900 N/mm <sup>2</sup> | suitable    | 120 m/min      | M        |
| INOX > 900 N/mm <sup>2</sup> | suitable    | 120 m/min      | M        |
| Ti > 850 N/mm <sup>2</sup>   | suitable    | 60 m/min       | S        |
| continuous                   | suitable    |                |          |
| irregular                    | suitable    |                |          |
| interrupted                  | suitable    |                |          |
| wet maximum                  | suitable    |                |          |