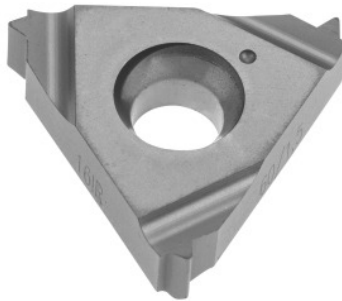


Garant**Full profile insert 60°, internal, right-hand, HB7020, Pitch: 1,25mm**

Order data

| | |
|--------------|---------------|
| Order number | 270758 1,25 |
| GTIN | 4045197370297 |
| Item class | 21J |

Description

Version:**Full profile insert 60°** for internal threads to DIN / ISO R 262 (DIN 13) tolerance class 6H.

Technical description

| | |
|-------------------------------|--------------|
| Tool material | Carbide |
| Thread pitch | 1.25 mm |
| Application type | right-hand |
| Internal/external application | inner |
| Indexable insert profile | Full profile |
| Grade | HB7020 |
| Tolerance class | DIN 13 6H |
| Thread type | M |
| Thread type | MF |
| Thread type | M-LH |

| | |
|-----------------|-------------------------------------|
| Thread type | MF-LH |
| Flank angle | 60 degrees |
| Thickness | 3.6 mm |
| Insert size L | 16 mm |
| Type of product | Indexable insert for thread turning |

User data

| | Suitability | V _c | ISO code |
|--------------------------------|---|----------------|----------|
| Aluminium (short chipping) | suitable only under restricted conditions | 200 m/min | N |
| Alu > 10% Si | suitable only under restricted conditions | 180 m/min | N |
| Steel < 500 N/mm ² | suitable only under restricted conditions | 160 m/min | P |
| Steel < 750 N/mm ² | suitable | 160 m/min | P |
| Steel < 900 N/mm ² | suitable | 120 m/min | P |
| Steel < 1100 N/mm ² | suitable | 90 m/min | P |
| Steel < 1400 N/mm ² | suitable only under restricted conditions | 70 m/min | P |
| Steel < 55 HRC | suitable only under restricted conditions | 30 m/min | H |
| INOX < 900 N/mm ² | suitable only under restricted conditions | 90 m/min | M |
| INOX > 900 N/mm ² | suitable only under restricted conditions | 90 m/min | M |
| Ti > 850 N/mm ² | suitable only under restricted conditions | 50 m/min | S |
| GG(G) | suitable | 120 m/min | K |
| CuZn | suitable only under restricted conditions | 120 m/min | N |
| continuous | suitable only under restricted conditions | | |

| | |
|-------------|--|
| irregular | suitable |
| interrupted | suitable |
| wet maximum | suitable |
| dry | suitable only under restricted conditions |