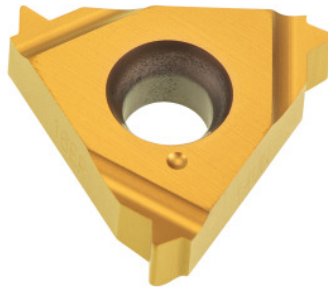


**Garant**
**Full profile insert 60°, external, right-hand, HB7010, TPI: 20**

**Order data**

Order number	270900 20
GTIN	4045197531728
Item class	21J

**Technical description**

Number of turns/inch	20
Tool material	Carbide
Internal/external application	external
Application type	right-hand
Indexable insert profile	Full profile
Grade	HB7010
Thread type	UNS
Thread type	UNF
Thread type	UNEF
Thread type	UN
Thread type	UNC
Thread type	UN-LH

Thread type	UNC-LH
Thread type	UNF-LH
Thread type	UNEF-LH
Thread type	UNS-LH
Flank angle	60 degrees
Thickness	3.6 mm
Insert size L	16 mm
Type of product	Indexable insert for thread turning

### User data

	Suitability	V <sub>c</sub>	ISO code
Aluminium (short chipping)	suitable	250 m/min	N
Alu > 10% Si	suitable	180 m/min	N
Steel < 500 N/mm <sup>2</sup>	suitable	150 m/min	P
Steel < 750 N/mm <sup>2</sup>	suitable	150 m/min	P
Steel < 900 N/mm <sup>2</sup>	suitable	130 m/min	P
Steel < 1100 N/mm <sup>2</sup>	suitable	100 m/min	P
Steel < 1400 N/mm <sup>2</sup>	suitable	90 m/min	P
Steel < 55 HRC	suitable only under restricted conditions	40 m/min	H
INOX < 900 N/mm <sup>2</sup>	suitable only under restricted conditions	100 m/min	M
INOX > 900 N/mm <sup>2</sup>	suitable only under restricted conditions	100 m/min	M
Ti > 850 N/mm <sup>2</sup>	suitable only under restricted conditions	50 m/min	S
GG(G)	suitable	130 m/min	K
CuZn	suitable only under restricted conditions	150 m/min	N
continuous	suitable		

wet maximum	suitable
dry	suitable only under restricted conditions