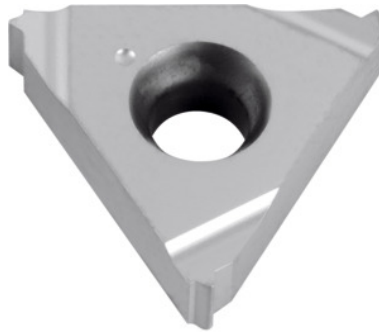


**Garant**
**Full profile insert 55°, internal, right-hand, HB7125, TPI: 28**


### Order data

Order number	270827 28
GTIN	4045197463166
Item class	21J

### Technical description

Number of turns/inch	28
Tool material	Carbide
Internal/external application	inner
Application type	right-hand
Indexable insert profile	Full profile
Grade	HB7125
Thread type	BSW
Thread type	BSP-LH
Thread type	BSP
Thread type	BSW-LH
Thread type	G
Thread type	G-LH

Flank angle	55 degrees
Thickness	3.6 mm
Insert size L	16 mm
Type of product	Indexable insert for thread turning

## User data

	<b>Suitability</b>	<b>V<sub>c</sub></b>	<b>ISO code</b>
INOX < 900 N/mm <sup>2</sup>	suitable	120 m/min	M
INOX > 900 N/mm <sup>2</sup>	suitable	120 m/min	M
Ti > 850 N/mm <sup>2</sup>	suitable	60 m/min	S
continuous	suitable		
irregular	suitable		
interrupted	suitable		
wet maximum	suitable		