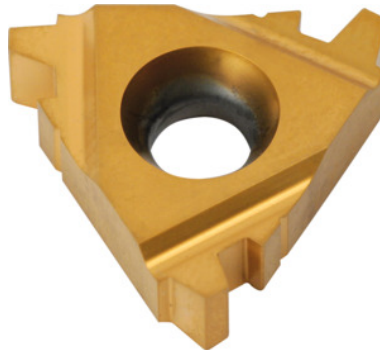


**Garant****Semi-profile insert 30°, external, left-hand, HB7010, Pitch: 4mm****Order data**

|              |               |
|--------------|---------------|
| Order number | 270858 4      |
| GTIN         | 4045197368263 |
| Item class   | 21J           |

**Technical description**

|                               |              |
|-------------------------------|--------------|
| Tool material                 | Carbide      |
| Thread pitch                  | 4 mm         |
| Application type              | left-hand    |
| Internal/external application | external     |
| Indexable insert profile      | Semi-profile |
| Grade                         | HB7010       |
| Tolerance class               | DIN 103 7e   |
| Thread type                   | TR           |
| Thread type                   | TR-LH        |
| Flank angle                   | 30 degrees   |
| Thickness                     | 4.76 mm      |
| Insert size L                 | 22 mm        |

Type of product

Indexable insert for thread turning

**User data**

|                                | <b>Suitability</b>                        | <b>V<sub>c</sub></b> | <b>ISO code</b> |
|--------------------------------|---|----------------------|-----------------|
| Aluminium (short chipping)     | suitable                                  | 250 m/min            | N               |
| Alu > 10% Si                   | suitable                                  | 180 m/min            | N               |
| Steel < 500 N/mm <sup>2</sup>  | suitable                                  | 150 m/min            | P               |
| Steel < 750 N/mm <sup>2</sup>  | suitable                                  | 150 m/min            | P               |
| Steel < 900 N/mm <sup>2</sup>  | suitable                                  | 130 m/min            | P               |
| Steel < 1100 N/mm <sup>2</sup> | suitable                                  | 100 m/min            | P               |
| Steel < 1400 N/mm <sup>2</sup> | suitable                                  | 90 m/min             | P               |
| Steel < 55 HRC                 | suitable only under restricted conditions | 40 m/min             | H               |
| INOX < 900 N/mm <sup>2</sup>   | suitable only under restricted conditions | 100 m/min            | M               |
| INOX > 900 N/mm <sup>2</sup>   | suitable only under restricted conditions | 100 m/min            | M               |
| Ti > 850 N/mm <sup>2</sup>     | suitable only under restricted conditions | 50 m/min             | S               |
| GG(G)                          | suitable                                  | 130 m/min            | K               |
| CuZn                           | suitable only under restricted conditions | 150 m/min            | N               |
| continuous                     | suitable                                  |                      |                 |
| wet maximum                    | suitable                                  |                      |                 |
| dry                            | suitable only under restricted conditions |                      |                 |