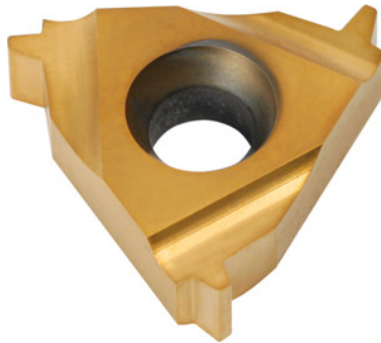


**Garant****Semi-profile insert 30°, internal, right-hand, HB7010, Pitch: 2mm****Order data**

Order number	270870 2
GTIN	4045197368270
Item class	21J

**Technical description**

Tool material	Carbide
Thread pitch	2 mm
Application type	right-hand
Internal/external application	inner
Indexable insert profile	Semi-profile
Grade	HB7010
Tolerance class	DIN 103 7H
Thread type	TR
Thread type	TR-LH
Flank angle	30 degrees
Thickness	3.6 mm
Insert size L	16 mm

Type of product

Indexable insert for thread turning

**User data**

	<b>Suitability</b>	<b>V<sub>c</sub></b>	<b>ISO code</b>
Aluminium (short chipping)	suitable	250 m/min	N
Alu > 10% Si	suitable	180 m/min	N
Steel < 500 N/mm <sup>2</sup>	suitable	150 m/min	P
Steel < 750 N/mm <sup>2</sup>	suitable	150 m/min	P
Steel < 900 N/mm <sup>2</sup>	suitable	130 m/min	P
Steel < 1100 N/mm <sup>2</sup>	suitable	100 m/min	P
Steel < 1400 N/mm <sup>2</sup>	suitable	90 m/min	P
Steel < 55 HRC	suitable only under restricted conditions	40 m/min	H
INOX < 900 N/mm <sup>2</sup>	suitable only under restricted conditions	100 m/min	M
INOX > 900 N/mm <sup>2</sup>	suitable only under restricted conditions	100 m/min	M
Ti > 850 N/mm <sup>2</sup>	suitable only under restricted conditions	50 m/min	S
GG(G)	suitable	130 m/min	K
CuZn	suitable only under restricted conditions	150 m/min	N
continuous	suitable		
wet maximum	suitable		
dry	suitable only under restricted conditions		