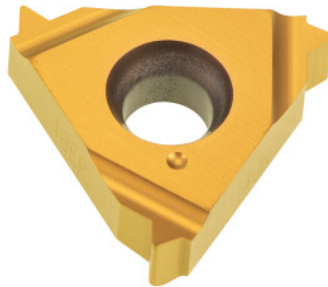


Garant**Full profile insert 60°, external, right-hand, HB7010, TPI: 8****Order data**

Order number	270900 8
GTIN	4045197531766
Item class	21J

Technical description

Number of turns/inch	8
Tool material	Carbide
Internal/external application	external
Application type	right-hand
Indexable insert profile	Full profile
Grade	HB7010
Thread type	UNS
Thread type	UNF
Thread type	UNEF
Thread type	UN
Thread type	UNC
Thread type	UN-LH

Thread type	UNC-LH
Thread type	UNF-LH
Thread type	UNEF-LH
Thread type	UNS-LH
Flank angle	60 degrees
Thickness	3.6 mm
Insert size L	16 mm
Type of product	Indexable insert for thread turning

User data

	Suitability	V _c	ISO code
Aluminium (short chipping)	suitable	250 m/min	N
Alu > 10% Si	suitable	180 m/min	N
Steel < 500 N/mm ²	suitable	150 m/min	P
Steel < 750 N/mm ²	suitable	150 m/min	P
Steel < 900 N/mm ²	suitable	130 m/min	P
Steel < 1100 N/mm ²	suitable	100 m/min	P
Steel < 1400 N/mm ²	suitable	90 m/min	P
Steel < 55 HRC	suitable only under restricted conditions	40 m/min	H
INOX < 900 N/mm ²	suitable only under restricted conditions	100 m/min	M
INOX > 900 N/mm ²	suitable only under restricted conditions	100 m/min	M
Ti > 850 N/mm ²	suitable only under restricted conditions	50 m/min	S
GG(G)	suitable	130 m/min	K
CuZn	suitable only under restricted conditions	150 m/min	N
continuous	suitable		

wet maximum	suitable
dry	suitable only under restricted conditions