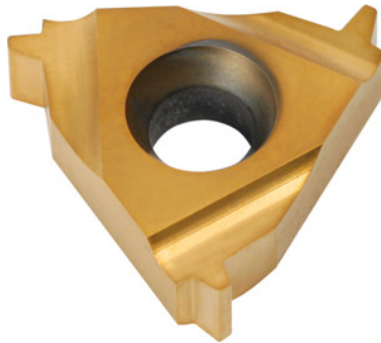


Garant**Semi-profile insert 30°, internal, right-hand, HB7010, Pitch: 4mm****Order data**

| | |
|--------------|---------------|
| Order number | 270873 4 |
| GTIN | 4045197410313 |
| Item class | 21J |

Technical description

| | |
|-------------------------------|--------------|
| Tool material | Carbide |
| Thread pitch | 4 mm |
| Application type | right-hand |
| Internal/external application | inner |
| Indexable insert profile | Semi-profile |
| Grade | HB7010 |
| Tolerance class | DIN 103 7H |
| Thread type | TR |
| Thread type | TR-LH |
| Flank angle | 30 degrees |
| Thickness | 4.76 mm |
| Insert size L | 22 mm |

Type of product

Indexable insert for thread turning

User data

| | Suitability | V_c | ISO code |
|--------------------------------|---|----------------------|-----------------|
| Aluminium (short chipping) | suitable | 250 m/min | N |
| Alu > 10% Si | suitable | 180 m/min | N |
| Steel < 500 N/mm ² | suitable | 150 m/min | P |
| Steel < 750 N/mm ² | suitable | 150 m/min | P |
| Steel < 900 N/mm ² | suitable | 130 m/min | P |
| Steel < 1100 N/mm ² | suitable | 100 m/min | P |
| Steel < 1400 N/mm ² | suitable | 90 m/min | P |
| Steel < 55 HRC | suitable only under restricted conditions | 40 m/min | H |
| INOX < 900 N/mm ² | suitable only under restricted conditions | 100 m/min | M |
| INOX > 900 N/mm ² | suitable only under restricted conditions | 100 m/min | M |
| Ti > 850 N/mm ² | suitable only under restricted conditions | 50 m/min | S |
| GG(G) | suitable | 130 m/min | K |
| CuZn | suitable only under restricted conditions | 150 m/min | N |
| continuous | suitable | | |
| wet maximum | suitable | | |
| dry | suitable only under restricted conditions | | |