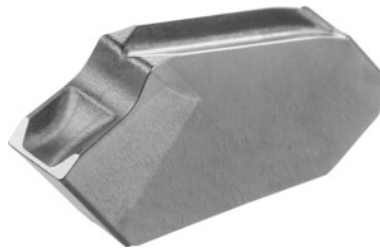


Garant
Parting-off insert neutral, CU7033, Groove width w: 4,1 mm

Order data

| | |
|--------------|---------------|
| Order number | 273300 4,1 |
| GTIN | 4045197143419 |
| Item class | 21J |

Description
Application:

For parting-off tools No. 273551 – 273558.

Corner radius: 0.2 mm

Feed f in steel < 900 N/mm²: 0.12 mm/rev.

Technical description

| | |
|---|------------------------------------|
| Groove width w | 4.1 mm |
| Feed f in steel < 900 N/mm ² | 0.12 mm/rev. |
| Corner radius | 0.2 mm |
| Finishing/roughing assignment | Skrubbearbejdning-sletbearbejdning |
| Tool material | Cermet |
| Coating | uncoated |
| Main application | P |
| Cutting conditions | continuous |
| Grade | CU7033 |
| Number of changes/inserts | 1 |

| | |
|--------------------------|-------------------------------|
| Indexable insert profile | neutral |
| Type of product | Indexable insert for grooving |

User data

| | Suitability | V _c | ISO code |
|--------------------------------|---|----------------|----------|
| Steel < 500 N/mm ² | suitable | 120 m/min | P |
| Steel < 750 N/mm ² | suitable | 120 m/min | P |
| Steel < 900 N/mm ² | suitable | 100 m/min | P |
| Steel < 1100 N/mm ² | suitable | 80 m/min | P |
| Steel < 1400 N/mm ² | suitable only under restricted conditions | 40 m/min | P |
| continuous | suitable | | |
| dry | suitable | | |