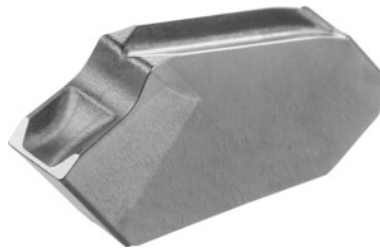


**Garant**
**Parting-off insert neutral, CU7033, Groove width w: 2,2mm**

**Order data**

Order number	273300 2,2
GTIN	4045197143396
Item class	21J

**Description**
**Application:**

For parting-off tools No. 273551 – 273558.

Corner radius: 0.2 mm

Feed f in steel < 900 N/mm<sup>2</sup>: 0.07 mm/rev.

**Technical description**

Groove width w	2.2 mm
Feed f in steel < 900 N/mm <sup>2</sup>	0.07 mm/rev.
Corner radius	0.2 mm
Finishing/roughing assignment	Skrubbearbejdning-sletbearbejdning
Tool material	Cermet
Coating	uncoated
Main application	P
Cutting conditions	continuous
Grade	CU7033
Number of changes/inserts	1

Indexable insert profile	neutral
Type of product	Indexable insert for grooving

## User data

	<b>Suitability</b>	<b>V<sub>c</sub></b>	<b>ISO code</b>
Steel < 500 N/mm <sup>2</sup>	suitable	120 m/min	P
Steel < 750 N/mm <sup>2</sup>	suitable	120 m/min	P
Steel < 900 N/mm <sup>2</sup>	suitable	100 m/min	P
Steel < 1100 N/mm <sup>2</sup>	suitable	80 m/min	P
Steel < 1400 N/mm <sup>2</sup>	suitable only under restricted conditions	40 m/min	P
continuous	suitable		
dry	suitable		