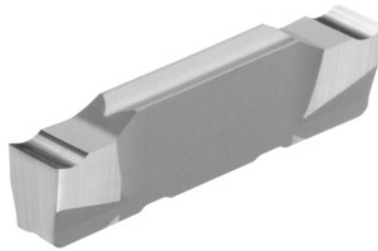


**Garant**
**Parting-off / grooving insert, HU7310, Groove width w: 2mm**

**Order data**

Order number	273697 2
GTIN	4045197580405
Item class	21L

**Description**

Parting-off / grooving insert 2 mm Tolerance groove width w:  $\pm 0.03$  mm  
Feed f: 0.05 - 0.15 mm/rev.

**Technical description**

Groove width w	2 mm
Tolerance groove width w	$\pm 0.03$ mm
Feed f	0.05 - 0.15 mm/rev.
Finishing/roughing assignment	Skrubbearbejdning-sletbearbejdning
Tool material	Carbide
Coating	uncoated
Main application	N
Secondary application	Ti
Cutting conditions	continuous
Grade	HU7310
Corner radius R	0.2 mm
Number of changes/inserts	2

Indexable insert profile	neutral
Type of product	Indexable insert for grooving

### User data

	Suitability	V <sub>c</sub>	ISO code
Alu plastics	suitable	350 m/min	N
Aluminium (short chipping)	suitable	350 m/min	N
Alu > 10% Si	suitable	280 m/min	N
Ti > 850 N/mm <sup>2</sup>	suitable	50 m/min	S
continuous	suitable		
irregular	suitable only under restricted conditions		
wet maximum	suitable		