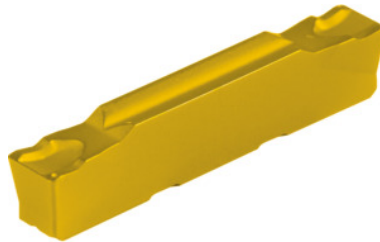


Garant
Parting-off / grooving insert, HB7215, Groove width w: 2,5mm

Order data

Order number	273702 2,5
GTIN	4045197578945
Item class	21J

Technical description

Groove width w	2.5 mm
Tolerance groove width w	±0.03 mm
Feed f	0.06 - 0.17 mm/rev.
Finishing/roughing assignment	Skrubbearbejdning-sletbearbejdning
Tool material	Carbide
Main application	K
Secondary application	P
Cutting conditions	continuous
Grade	HB7215
Corner radius R	0.2 mm
Number of changes/inserts	2
Indexable insert profile	neutral
Type of product	Indexable insert for grooving

User data

	Suitability	V_c	ISO code
Steel < 500 N/mm ²	suitable	300 m/min	P
Steel < 750 N/mm ²	suitable	250 m/min	P
Steel < 900 N/mm ²	suitable	210 m/min	P
GG(G)	suitable	280 m/min	K
continuous	suitable		
wet maximum	suitable		
dry	suitable only under restricted conditions		