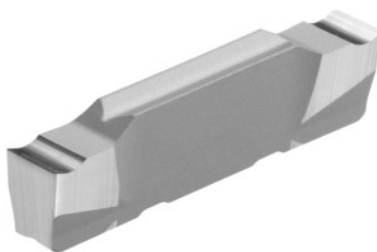


**Garant****Parting-off / grooving insert, HU7310, Groove width w: 6mm****Order data**

|              |               |
|--------------|---------------|
| Order number | 273697 6      |
| GTIN         | 4045197580450 |
| Item class   | 21L           |

**Technical description**

|                               |                                    |
|-------------------------------|------------------------------------|
| Groove width w                | 6 mm                               |
| Tolerance groove width w      | ±0.04 mm                           |
| Feed f                        | 0.09 - 0.34 mm/rev.                |
| Finishing/roughing assignment | Skrubbearbejdning-sletbearbejdning |
| Tool material                 | Carbide                            |
| Coating                       | uncoated                           |
| Main application              | N                                  |
| Secondary application         | Ti                                 |
| Cutting conditions            | continuous                         |
| Grade                         | HU7310                             |
| Corner radius R               | 0.2 mm                             |
| Number of changes/inserts     | 2                                  |
| Indexable insert profile      | neutral                            |
| Type of product               | Indexable insert for grooving      |

**User data**

|                            | <b>Suitability</b>                        | <b>V<sub>c</sub></b> | <b>ISO code</b> |
|----------------------------|---|----------------------|-----------------|
| Alu plastics               | suitable                                  | 350 m/min            | N               |
| Aluminium (short chipping) | suitable                                  | 350 m/min            | N               |
| Alu > 10% Si               | suitable                                  | 280 m/min            | N               |
| Ti > 850 N/mm <sup>2</sup> | suitable                                  | 50 m/min             | S               |
| continuous                 | suitable                                  |                      |                 |
| irregular                  | suitable only under restricted conditions |                      |                 |
| wet maximum                | suitable                                  |                      |                 |