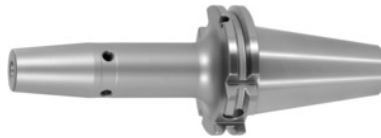




## Shrink-fit chuck, SK 40 short, Clamping range $\varnothing$ D1: 20mm



### Order data

Order number	302251 20
GTIN	2050001689627
Item class	33W

### Description

#### Version:

- **High-temperature steel.**
- **Size 3 -5 for carbide, from size 6 for HSS and carbide.**
- **All shanks hard turned (for smooth running!).**
- **With RFID / Balluffchip bore.**

Glass bead blasted.

#### Application:

For clamping tools with parallel shank to h6 tolerance.  
Suitable for inductive, contact, and hot-air shrink units.

#### Optional extras:

Pull studs (PS) No. 308600 – 308800. PS wrenches No. 308820 – 308835, Shrink-fit chuck extensions No. 302410 – 302419. Shrink-fit units, accessories No. 354210 – 354450, balancing screws set No. 309906 size 180.

### Technical description

Clamping $\varnothing$ D <sub>1</sub>	20 mm
Overhang dimension A	80 mm
$\varnothing$ D <sub>2</sub>	33 mm
External $\varnothing$ D	42 mm
Adapter	SK 40 short
Arbor standard	ISO 7388-1

Shape	ADB
Balance quality G at rotational speed	G 2.5 at 25,000 rpm
Concentricity	≤ 3 µm
Machining strategy	HSC
Machining strategy	HPC
Type of product	Shrink-fit chuck

## Accessories

Pull studForm A suitable for steep tapers 40	308600 40
Shrink-fit chuck extension 4.5°without length adjustment screw Ø d / Ø D1 32/20 mm	302410 32/20
Shrink-fit unit Type SU1	354210 SU1
Special pull stud with internal thread suitable for steep tapers 40	308740 40
Shrink-fit chuck extension 4.5°without length adjustment screw Ø d / Ø D1 32/20 mm	302416 32/20
Wrench for pull studsISO 7388 suitable for ISO taper size 40	308830 40
Special pull stud with no internal threadsealed suitable for steep tapers 40	308700 40
Hurco 45° pull stud with 4-mm bore and fitsealed suitable for steep tapers 40	308801 40
Pull stud 90°sealed suitable for steep tapers 40	308795 40
Shrink-fit chuck extension 4.5°with length adjustment screw Ø d / Ø D1 32/20 mm	302412 32/20
Screening plate for coilSU1 for clamping Ø 12-20 mm	354240 12-20
Pull studsealed suitable for steep tapers 40	308635 40
Pull stud, 18CrNiMo7Form A suitable for steep tapers 40	308605 40
Pull studMazak, form A suitable for steep tapers 40M	308670 40M
Pull stud 45°sealed suitable for steep tapers 40	308760 40
	308820 40

Wrench for pull studs DIN ISO 7388-1 (formerly DIN 69872)  
suitable for ISO taper size 40

Pull stud, 18CrNiMo7sealed, form B suitable for steep tapers 40	308615 40
Cooling adapter short 4.5° for clamping Ø 16,1-22 mm	354235 16,1-22
Pull stud Mori-Seiki, sealed, form A suitable for steep tapers 40	308630 40
Pull stud 90° sealed suitable for steep tapers 40	308790 40
Cooling unit Type CU1	354215 CU1
Pull stud Hurco 45° with fit sealed suitable for steep tapers 40	308802 40
Pull stud sealed, form B suitable for steep tapers 40	308650 40
Basic tool mounting for SK for SK taper shank 40	354225 40
Pull stud 45° sealed suitable for steep tapers 40	308765 40
Pull stud sealed, form A suitable for steep tapers 40	308610 40
Pull stud Hurco 90° with fit sealed suitable for steep tapers 40	308806 40
Pull stud sealed suitable for steep tapers 40	308660 40
Pull stud sealed, form B suitable for steep tapers 40	308620 40
Cooling adapter long 4.5° for clamping Ø 16,1-22 mm	354236 16,1-22
Pull stud 60° sealed suitable for steep tapers 40	308785 40
Screening plate for coil SU1 for clamping Ø 20-32 mm	354240 20-32
Pull stud Mori-Seiki, sealed, form A suitable for steep tapers 40	308625 40
Pull stud Form B suitable for steep tapers 40	308640 40