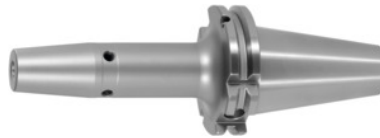




## Shrink-fit chuck, SK 40 A = 120, Clamping range $\varnothing$ D1: 10mm



### Order data

Order number	302254 10
GTIN	2050001689702
Item class	33W

### Description

#### Version:

- **High-temperature steel.**
- **Size 3 -5 for carbide, from size 6 for HSS and carbide.**
- **All shanks hard turned (for smooth running!).**
- **With RFID / Balluffchip bore.**

Glass bead blasted.

#### Application:

For clamping tools with parallel shank to h6 tolerance.  
Suitable for inductive, contact, and hot-air shrink units.

#### Optional extras:

Pull studs (PS) No. 308600 – 308800. PS wrenches No. 308820 – 308835, Shrink-fit chuck extensions No. 302410 – 302419. Shrink-fit units, accessories No. 354210 – 354450, balancing screws set No. 309906 size 180.

### Technical description

Clamping $\varnothing$ D <sub>1</sub>	10 mm
$\varnothing$ D <sub>2</sub>	24 mm
Overhang dimension A	120 mm
External $\varnothing$ D	32 mm
Adapter	SK 40 A = 120
Arbor standard	ISO 7388-1

Shape	ADB
Balance quality G at rotational speed	G 2.5 at 25,000 rpm
Concentricity	≤ 3 μm
Machining strategy	HSC
Machining strategy	HPC
Type of product	Shrink-fit chuck

## Accessories

Basic tool mounting for SK for SK taper shank 40	354225 40
Shrink-fit chuck extension 4.5° without length adjustment screw, with through coolant holes Ø d / Ø D1 32/10 mm	302414 32/10
Cooling adapter long 4.5° for clamping Ø 9,1-12 mm	354236 9,1-12
Pull stud 90° sealed suitable for steep tapers 40	308795 40
Cooling adapter short 4.5° for clamping Ø 9,1-12 mm	354235 9,1-12
Cooling unit Type CU1	354215 CU1
Pull stud Form A suitable for steep tapers 40	308600 40
Pull stud 45° sealed suitable for steep tapers 40	308760 40
Wrench for pull studs DIN ISO 7388-1 (formerly DIN 69872) suitable for ISO taper size 40	308820 40
Pull stud Hurco 45° with fit sealed suitable for steep tapers 40	308802 40
Shrink-fit chuck extension 4.5° without length adjustment screw Ø d / Ø D1 25/10 mm	302416 25/10
Special pull stud with no internal thread sealed suitable for steep tapers 40	308700 40
Pull stud sealed, form B suitable for steep tapers 40	308650 40
Pull stud 90° sealed suitable for steep tapers 40	308790 40
Shrink-fit chuck extension 4.5° with length adjustment screw Ø d / Ø D1 32/10 mm	302412 32/10
	308615 40

Pull stud, 18CrNiMo7sealed, form B suitable for steep tapers 40

Wrench for pull studsISO 7388 suitable for ISO taper size 40	308830 40
Pull studsealed, form B suitable for steep tapers 40	308620 40
Pull studsealed suitable for steep tapers 40	308660 40
Pull stud 45°sealed suitable for steep tapers 40	308765 40
Pull studsealed suitable for steep tapers 40	308635 40
Pull studMori-Seiki, sealed, form A suitable for steep tapers 40	308630 40
Shrink-fit chuck extension 4.5°without length adjustment screw Ø d / Ø D1 32/10 mm	302410 32/10
Shrink-fit unit Type SU1	354210 SU1
Pull stud, 18CrNiMo7Form A suitable for steep tapers 40	308605 40
Pull studForm B suitable for steep tapers 40	308640 40
Shrink-fit chuck extension 4.5°with length adjustment screw Ø d / Ø D1 25/10 mm	302412 25/10
Pull studMazak, form A suitable for steep tapers 40M	308670 40M
Shrink-fit chuck extension 4.5°without length adjustment screw Ø d / Ø D1 25/10 mm	302410 25/10
Screening plate for coilSU1 for clamping Ø 6-12 mm	354240 6-12
Shrink-fit chuck extension 4.5°without length adjustment screw Ø d / Ø D1 32/10 mm	302416 32/10
Pull studMori-Seiki, sealed, form A suitable for steep tapers 40	308625 40
Shrink fit chuck extension 3°, vibration-damped Ø d / Ø D1 20/10 mm	302415 20/10
Pull stud 60°sealed suitable for steep tapers 40	308785 40
Pull studsealed, form A suitable for steep tapers 40	308610 40
Special pull stud with internal thread suitable for steep tapers 40	308740 40
Hurco 45° pull stud with 4-mm bore and fitsealed suitable for steep tapers 40	308801 40
	308806 40

Pull stud Hurco 90° with fitsealed suitable for steep tapers  
40

---