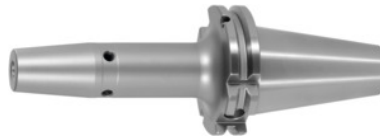




Shrink-fit chuck, SK 40 short, Clamping range \varnothing D1: 25mm



Order data

Order number	302251 25
GTIN	2050001689634
Item class	33W

Description

Version:

- **High-temperature steel.**
- **Size 3 -5 for carbide, from size 6 for HSS and carbide.**
- **All shanks hard turned (for smooth running!).**
- **With RFID / Balluffchip bore.**

Glass bead blasted.

Application:

For clamping tools with parallel shank to h6 tolerance.
Suitable for inductive, contact, and hot-air shrink units.

Optional extras:

Pull studs (PS) No. 308600 – 308800. PS wrenches No. 308820 – 308835, Shrink-fit chuck extensions No. 302410 – 302419. Shrink-fit units, accessories No. 354210 – 354450, balancing screws set No. 309906 size 180.

Technical description

Clamping \varnothing D ₁	25 mm
Overhang dimension A	100 mm
\varnothing D ₂	44 mm
External \varnothing D	53 mm
Adapter	SK 40 short
Arbor standard	ISO 7388-1

Shape	ADB
Balance quality G at rotational speed	G 2.5 at 25,000 rpm
Concentricity	≤ 3 μm
Machining strategy	HSC
Machining strategy	HPC
Type of product	Shrink-fit chuck

Accessories

Wrench for pull studsISO 7388 suitable for ISO taper size 40	308830 40
Pull studsealed, form B suitable for steep tapers 40	308620 40
Pull stud Hurco 90° with fitsealed suitable for steep tapers 40	308806 40
Wrench for pull studsDIN ISO 7388-1 (formerly DIN 69872) suitable for ISO taper size 40	308820 40
Cooling unit Type CU1	354215 CU1
Pull studMazak, form A suitable for steep tapers 40M	308670 40M
Pull stud Hurco 45° with fitsealed suitable for steep tapers 40	308802 40
Pull stud, 18CrNiMo7sealed, form B suitable for steep tapers 40	308615 40
Pull stud, 18CrNiMo7Form A suitable for steep tapers 40	308605 40
Pull stud 60°sealed suitable for steep tapers 40	308785 40
Cooling adapter long4.5° for clamping Ø 22,1-32 mm	354236 22,1-32
Pull stud 90°sealed suitable for steep tapers 40	308795 40
Pull stud 45°sealed suitable for steep tapers 40	308765 40
Pull studMori-Seiki, sealed, form A suitable for steep tapers 40	308625 40
Pull studsealed, form A suitable for steep tapers 40	308610 40
Pull studsealed suitable for steep tapers 40	308660 40

Basic tool mountingfor SK for SK taper shank 40	354225 40
Special pull stud with internal thread suitable for steep tapers 40	308740 40
Pull studsealed, form B suitable for steep tapers 40	308650 40
Pull stud 45°sealed suitable for steep tapers 40	308760 40
Pull studForm A suitable for steep tapers 40	308600 40
Pull studMori-Seiki, sealed, form A suitable for steep tapers 40	308630 40
Pull studForm B suitable for steep tapers 40	308640 40
Cooling adapter short4.5° for clamping Ø 22,1-32 mm	354235 22,1-32
Hurco 45° pull stud with 4-mm bore and fitsealed suitable for steep tapers 40	308801 40
Pull stud 90°sealed suitable for steep tapers 40	308790 40
Pull studsealed suitable for steep tapers 40	308635 40
Screening plate for coilSU1 for clamping Ø 20-32 mm	354240 20-32
Shrink-fit unit Type SU1	354210 SU1
Special pull stud with no internal threadsealed suitable for steep tapers 40	308700 40