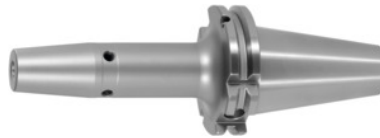




Shrink-fit chuck, SK 40 A = 120, Clamping range \varnothing D1: 12mm



Order data

Order number	302254 12
GTIN	2050001689719
Item class	33W

Description

Version:

- **High-temperature steel.**
- **Size 3 -5 for carbide, from size 6 for HSS and carbide.**
- **All shanks hard turned (for smooth running!).**
- **With RFID / Balluffchip bore.**

Glass bead blasted.

Application:

For clamping tools with parallel shank to h6 tolerance.
Suitable for inductive, contact, and hot-air shrink units.

Optional extras:

Pull studs (PS) No. 308600 – 308800. PS wrenches No. 308820 – 308835, Shrink-fit chuck extensions No. 302410 – 302419. Shrink-fit units, accessories No. 354210 – 354450, balancing screws set No. 309906 size 180.

Technical description

Overhang dimension A	120 mm
Clamping \varnothing D ₁	12 mm
\varnothing D ₂	24 mm
External \varnothing D	32 mm
Adapter	SK 40 A = 120
Arbor standard	ISO 7388-1

Shape	ADB
Balance quality G at rotational speed	G 2.5 at 25,000 rpm
Concentricity	≤ 3 µm
Machining strategy	HSC
Machining strategy	HPC
Type of product	Shrink-fit chuck

Accessories

Pull studsealed suitable for steep tapers 40	308660 40
Pull studForm A suitable for steep tapers 40	308600 40
Pull studsealed, form B suitable for steep tapers 40	308620 40
Pull stud, 18CrNiMo7Form A suitable for steep tapers 40	308605 40
Screening plate for coilSU1 for clamping Ø 6-12 mm	354240 6-12
Special pull stud with internal thread suitable for steep tapers 40	308740 40
Pull stud 60°sealed suitable for steep tapers 40	308785 40
Special pull stud with no internal threadsealed suitable for steep tapers 40	308700 40
Pull studsealed suitable for steep tapers 40	308635 40
Cooling adapter short4.5° for clamping Ø 9,1-12 mm	354235 9,1-12
Pull studsealed, form B suitable for steep tapers 40	308650 40
Screening plate for coilSU1 for clamping Ø 12-20 mm	354240 12-20
Shrink-fit chuck extension 4.5°without length adjustment screw Ø d / Ø D1 25/12 mm	302410 25/12
Pull stud 90°sealed suitable for steep tapers 40	308795 40
Shrink-fit unit Type SU1	354210 SU1
Pull stud 45°sealed suitable for steep tapers 40	308765 40
Pull stud, 18CrNiMo7sealed, form B suitable for steep tapers 40	308615 40

Pull stud Hurco 45° with fitsealed suitable for steep tapers 40	308802 40
Pull stud 45°sealed suitable for steep tapers 40	308760 40
Shrink-fit chuck extension 4.5°with length adjustment screw Ø d / Ø D1 32/12 mm	302412 32/12
Pull studForm B suitable for steep tapers 40	308640 40
Pull studsealed, form A suitable for steep tapers 40	308610 40
Shrink fit chuck extension 3°, vibration-damped Ø d / Ø D1 20/12 mm	302415 20/12
Cooling unit Type CU1	354215 CU1
Shrink-fit chuck extension 4.5°with length adjustment screw Ø d / Ø D1 25/12 mm	302412 25/12
Shrink-fit chuck extension 4.5°without length adjustment screw Ø d / Ø D1 32/12 mm	302410 32/12
Pull stud Hurco 90° with fitsealed suitable for steep tapers 40	308806 40
Hurco 45° pull stud with 4-mm bore and fitsealed suitable for steep tapers 40	308801 40
Pull stud 90°sealed suitable for steep tapers 40	308790 40
Shrink-fit chuck extension 4.5°without length adjustment screw Ø d / Ø D1 32/12 mm	302416 32/12
Basic tool mountingfor SK for SK taper shank 40	354225 40
Pull studMazak, form A suitable for steep tapers 40M	308670 40M
Shrink-fit chuck extension 4.5°without length adjustment screw Ø d / Ø D1 25/12 mm	302416 25/12
Cooling adapter long4.5° for clamping Ø 9,1-12 mm	354236 9,1-12
Wrench for pull studsDIN ISO 7388-1 (formerly DIN 69872) suitable for ISO taper size 40	308820 40
Pull studMori-Seiki, sealed, form A suitable for steep tapers 40	308630 40
Wrench for pull studsISO 7388 suitable for ISO taper size 40	308830 40
Pull studMori-Seiki, sealed, form A suitable for steep tapers 40	308625 40