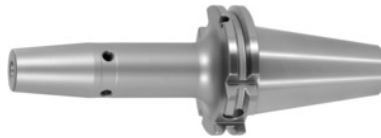




Shrink-fit chuck, SK 40 A = 120, Clamping range \varnothing D1: 14mm



Order data

| | |
|--------------|---------------|
| Order number | 302254 14 |
| GTIN | 2050001689726 |
| Item class | 33W |

Description

Version:

- **High-temperature steel.**
- **Size 3 -5 for carbide, from size 6 for HSS and carbide.**
- **All shanks hard turned (for smooth running!).**
- **With RFID / Balluffchip bore.**

Glass bead blasted.

Application:

For clamping tools with parallel shank to h6 tolerance.
Suitable for inductive, contact, and hot-air shrink units.

Optional extras:

Pull studs (PS) No. 308600 – 308800. PS wrenches No. 308820 – 308835, Shrink-fit chuck extensions No. 302410 – 302419. Shrink-fit units, accessories No. 354210 – 354450, balancing screws set No. 309906 size 180.

Technical description

| | |
|---------------------------------------|---------------|
| Overhang dimension A | 120 mm |
| Clamping \varnothing D ₁ | 14 mm |
| \varnothing D ₂ | 27 mm |
| External \varnothing D | 34 mm |
| Adapter | SK 40 A = 120 |
| Arbor standard | ISO 7388-1 |

| | |
|---------------------------------------|---------------------|
| Shape | ADB |
| Balance quality G at rotational speed | G 2.5 at 25,000 rpm |
| Concentricity | ≤ 3 μm |
| Machining strategy | HSC |
| Machining strategy | HPC |
| Type of product | Shrink-fit chuck |

Accessories

| | |
|---|--------------|
| Pull stud 90°sealed suitable for steep tapers 40 | 308795 40 |
| Shrink fit chuck extension 3°, vibration-damped Ø d / Ø D1 25/14 mm | 302417 25/14 |
| Special pull stud with no internal threadsealed suitable for steep tapers 40 | 308700 40 |
| Pull studsealed suitable for steep tapers 40 | 308660 40 |
| Pull stud Hurco 45° with fitsealed suitable for steep tapers 40 | 308802 40 |
| Shrink-fit chuck extension 4.5°without length adjustment screw Ø d / Ø D1 25/14 mm | 302416 25/14 |
| Pull studsealed, form B suitable for steep tapers 40 | 308620 40 |
| Pull studForm A suitable for steep tapers 40 | 308600 40 |
| Screening plate for coilSU1 for clamping Ø 12-20 mm | 354240 12-20 |
| Shrink-fit chuck extension 4.5°without length adjustment screw Ø d / Ø D1 32/12 mm | 302416 32/12 |
| Pull stud 90°sealed suitable for steep tapers 40 | 308790 40 |
| Pull stud 60°sealed suitable for steep tapers 40 | 308785 40 |
| Pull studForm B suitable for steep tapers 40 | 308640 40 |
| Hurco 45° pull stud with 4-mm bore and fitsealed suitable for steep tapers 40 | 308801 40 |
| Wrench for pull studsDIN ISO 7388-1 (formerly DIN 69872) suitable for ISO taper size 40 | 308820 40 |

| | |
|---|----------------|
| Cooling adapter short 4.5° for clamping Ø 12,1-16 mm | 354235 12,1-16 |
| Shrink-fit chuck extension 4.5° without length adjustment screw Ø d / Ø D1 32/14 mm | 302410 32/14 |
| Pull stud 45° sealed suitable for steep tapers 40 | 308765 40 |
| Shrink-fit chuck extension 4.5° without length adjustment screw Ø d / Ø D1 25/12 mm | 302416 25/12 |
| Shrink-fit chuck extension 4.5° with length adjustment screw Ø d / Ø D1 32/14 mm | 302412 32/14 |
| Wrench for pull studs ISO 7388 suitable for ISO taper size 40 | 308830 40 |
| Pull stud Mori-Seiki, sealed, form A suitable for steep tapers 40 | 308625 40 |
| Pull stud Mazak, form A suitable for steep tapers 40M | 308670 40M |
| Pull stud sealed, form B suitable for steep tapers 40 | 308650 40 |
| Shrink-fit chuck extension 4.5° with length adjustment screw Ø d / Ø D1 25/14 mm | 302412 25/14 |
| Cooling unit Type CU1 | 354215 CU1 |
| Shrink-fit chuck extension 4.5° with length adjustment screw Ø d / Ø D1 32/12 mm | 302412 32/12 |
| Special pull stud with internal thread suitable for steep tapers 40 | 308740 40 |
| Shrink-fit chuck extension 4.5° with length adjustment screw Ø d / Ø D1 25/12 mm | 302412 25/12 |
| Pull stud Mori-Seiki, sealed, form A suitable for steep tapers 40 | 308630 40 |
| Pull stud Hurco 90° with fit sealed suitable for steep tapers 40 | 308806 40 |
| Basic tool mounting for SK for SK taper shank 40 | 354225 40 |
| Shrink-fit chuck extension 4.5° without length adjustment screw Ø d / Ø D1 25/14 mm | 302410 25/14 |
| Pull stud, 18CrNiMo7Form A suitable for steep tapers 40 | 308605 40 |
| Cooling adapter long 4.5° for clamping Ø 12,1-16 mm | 354236 12,1-16 |
| Shrink-fit unit Type SU1 | 354210 SU1 |
| Pull stud sealed suitable for steep tapers 40 | 308635 40 |

| | |
|--|--------------|
| Shrink-fit chuck extension 4.5°without length adjustment screw \varnothing d / \varnothing D1 25/12 mm | 302410 25/12 |
| Pull studsealed, form A suitable for steep tapers 40 | 308610 40 |
| Shrink-fit chuck extension 4.5°without length adjustment screw, with through coolant holes \varnothing d / \varnothing D1 32/14 mm | 302414 32/14 |
| Pull stud 45°sealed suitable for steep tapers 40 | 308760 40 |
| Shrink-fit chuck extension 4.5°without length adjustment screw \varnothing d / \varnothing D1 32/12 mm | 302410 32/12 |
| Pull stud, 18CrNiMo7sealed, form B suitable for steep tapers 40 | 308615 40 |
| Shrink-fit chuck extension 4.5°without length adjustment screw \varnothing d / \varnothing D1 32/14 mm | 302416 32/14 |
| Shrink fit chuck extension 3°, vibration-damped \varnothing d / \varnothing D1 20/12 mm | 302415 20/12 |