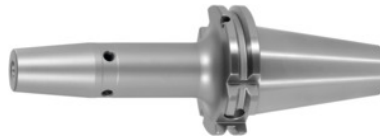




Shrink-fit chuck, SK 40 A = 120, Clamping range \varnothing D1: 16mm



Order data

Order number	302254 16
GTIN	2050001689733
Item class	33W

Description

Version:

- High-temperature steel.
- Size 3 -5 for carbide, from size 6 for HSS and carbide.
- All shanks hard turned (for smooth running!).
- With RFID / Balluffchip bore.

Glass bead blasted.

Application:

For clamping tools with parallel shank to h6 tolerance.
Suitable for inductive, contact, and hot-air shrink units.

Optional extras:

Pull studs (PS) No. 308600 – 308800. PS wrenches No. 308820 – 308835, Shrink-fit chuck extensions No. 302410 – 302419. Shrink-fit units, accessories No. 354210 – 354450, balancing screws set No. 309906 size 180.

Technical description

Clamping \varnothing D ₁	16 mm
\varnothing D ₂	27 mm
Overhang dimension A	120 mm
External \varnothing D	34 mm
Adapter	SK 40 A = 120
Arbor standard	ISO 7388-1

Shape	ADB
Balance quality G at rotational speed	G 2.5 at 25,000 rpm
Concentricity	≤ 3 μm
Machining strategy	HSC
Machining strategy	HPC
Type of product	Shrink-fit chuck

Accessories

Special pull stud with no internal threadsealed suitable for steep tapers 40	308700 40
Pull stud 45°sealed suitable for steep tapers 40	308765 40
Pull studsealed, form B suitable for steep tapers 40	308620 40
Shrink-fit chuck extension 4.5°without length adjustment screw Ø d / Ø D1 25/16 mm	302410 25/16
Pull stud 90°sealed suitable for steep tapers 40	308790 40
Wrench for pull studsISO 7388 suitable for ISO taper size 40	308830 40
Pull stud, 18CrNiMo7sealed, form B suitable for steep tapers 40	308615 40
Cooling adapter long4.5° for clamping Ø 12,1-16 mm	354236 12,1-16
Pull stud 45°sealed suitable for steep tapers 40	308760 40
Pull stud 60°sealed suitable for steep tapers 40	308785 40
Shrink-fit chuck extension 4.5°with length adjustment screw Ø d / Ø D1 25/16 mm	302412 25/16
Pull stud Hurco 45° with fitsealed suitable for steep tapers 40	308802 40
Pull studForm B suitable for steep tapers 40	308640 40
Pull stud, 18CrNiMo7Form A suitable for steep tapers 40	308605 40
Hurco 45° pull stud with 4-mm bore and fitsealed suitable for steep tapers 40	308801 40
Pull studsealed suitable for steep tapers 40	308660 40

Shrink-fit chuck extension 4.5°without length adjustment screw \varnothing d / \varnothing D1 32/16 mm	302416 32/16
Wrench for pull studsDIN ISO 7388-1 (formerly DIN 69872) suitable for ISO taper size 40	308820 40
Pull studsealed, form B suitable for steep tapers 40	308650 40
Pull studsealed suitable for steep tapers 40	308635 40
Pull studsealed, form A suitable for steep tapers 40	308610 40
Special pull stud with internal thread suitable for steep tapers 40	308740 40
Pull studMazak, form A suitable for steep tapers 40M	308670 40M
Shrink-fit unit Type SU1	354210 SU1
Pull studMori-Seiki, sealed, form A suitable for steep tapers 40	308630 40
Cooling unit Type CU1	354215 CU1
Pull studMori-Seiki, sealed, form A suitable for steep tapers 40	308625 40
Shrink-fit chuck extension 4.5°without length adjustment screw \varnothing d / \varnothing D1 25/16 mm	302416 25/16
Pull studForm A suitable for steep tapers 40	308600 40
Screening plate for coilSU1 for clamping \varnothing 12-20 mm	354240 12-20
Pull stud 90°sealed suitable for steep tapers 40	308795 40
Pull stud Hurco 90° with fitsealed suitable for steep tapers 40	308806 40
Shrink-fit chuck extension 4.5°with length adjustment screw \varnothing d / \varnothing D1 32/16 mm	302412 32/16
Shrink-fit chuck extension 4.5°without length adjustment screw \varnothing d / \varnothing D1 32/16 mm	302410 32/16
Basic tool mountingfor SK for SK taper shank 40	354225 40
Cooling adapter short4.5° for clamping \varnothing 12,1-16 mm	354235 12,1-16