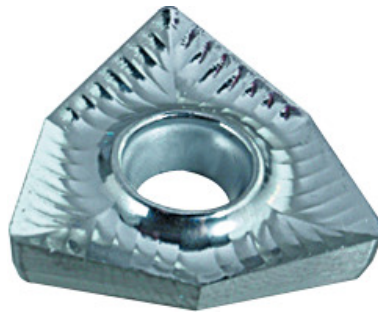


**Garant**
**WCHX 10T304, Type: ALU**


## Order data

|              |               |
|--------------|---------------|
| Order number | 268492 ALU    |
| GTIN         | 4045197470881 |
| Item class   | 21K           |

## Description

### Suitable for:

Boring tool No. 268463 – 268468, size 20.

## Technical description

|   |                 |
|---|-----------------|
| Main application                          | N               |
| Cutting speed $v_c$ secondary application | 180 m/min       |
| Cutting speed $v_c$ main application      | 300 - 600 m/min |
| Corner radius                             | 0.2 mm          |
| Type                                      | ALU             |
| Secondary application                     | K               |
| Grade                                     | HU70AL          |
| Tool material                             | Carbide         |
| ISO code indexable insert                 | WCHX 10T304     |
| Number of changes/inserts                 | 3               |

|                              |                              |
|------------------------------|------------------------------|
| suitable for tool dia. $D_c$ | 20 mm                        |
| Type of product              | Indexable insert for turning |