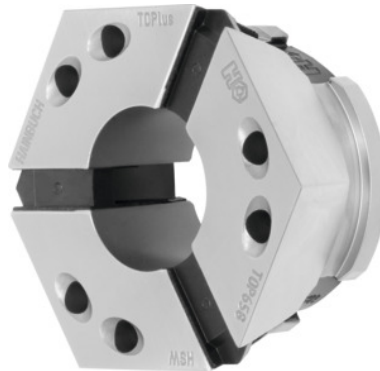


**Clamping head soft, Top 65, Initial bore Ø: 8mm****Order data**

| | |
|--------------|---------------|
| Order number | 329976 8 |
| GTIN | 2050001928412 |
| Item class | 33H |

Description**Version:**

Clamping heads, **round profile, in 0.5 mm increments. Please specify required clamping Ø with order.**

Soft (reduced hardness of 40 HRC in the bore) for boring out.

Advantage:

- **25% greater clamping force than clamping head RD.**
- **No radial movement between clamping head and clamping element mounting, therefore immune to dirt.**
- **Unique stiffness due to large seating area of the clamping segments.**

Application:

Versatile application range: machining centres, measuring machines, and pallet clamping.

Recommendation:

Clamping heads for special profiles to your individual requirements on request.

Note:

Other taper sizes and shapes (e.g. square) and machinable blanks **on request!**

Technical description

| | |
|----------------|------|
| Initial bore Ø | 8 mm |
|----------------|------|

| | |
|-----------------|---------------|
| Hardness | 60 HR |
| Profile | Hexagon |
| Length L | 49 mm |
| Adapter | Top 65 |
| Type of product | Clamping head |