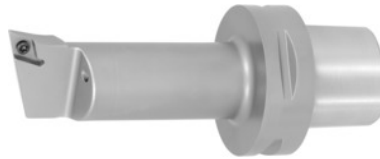


SWISS TOOLS

Screw-on boring bar left-hand, PSC, Shank \varnothing / insert size – A dimension: 50/11-90mm



Order data

Order number	320396 50/11-90
GTIN	2050001715746
Item class	36D

Description

Note:

Order the suitable **HP nozzle** No. 320001 separately. Spare parts No. 320610 – 320626 can be found in the spare parts list.
PSC clamping stud on request.

Technical description

Axis tip distance f	17 mm
Overhang dimension A	90 mm
Insert size	11
Spare part	S05
suitable indexable insert	DC.. 11T3..
Minimum pre-drill $\varnothing D_1$ min	32 mm
Shank \varnothing	50 mm
Usable length L_N	70 mm
Adapter	PSC
Application type	left-hand
Arbor standard	ISO 26623-1

Through-coolant	yes
Setting angle κ	107.5 degrees
Type of product	boring bar holder