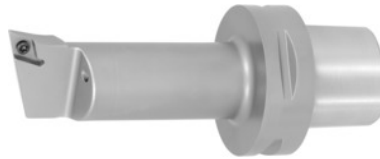


SWISS TOOLS

Screw-on boring bar left-hand, PSC, Shank \varnothing / insert size – A dimension: 63/11-160mm



Order data

Order number	320396 63/11-160
GTIN	2050001715753
Item class	36D

Description

Note:

Order the suitable **HP nozzle** No. 320001 separately. Spare parts No. 320610 – 320626 can be found in the spare parts list.
PSC clamping stud on request.

Technical description

suitable indexable insert	DC.. 11T3..
Insert size	11
Axis tip distance f	22 mm
Spare part	S05
Minimum pre-drill $\varnothing D_1$ min	40 mm
Overhang dimension A	160 mm
Shank \varnothing	63 mm
Usable length L_N	138 mm
Adapter	PSC
Application type	left-hand
Arbor standard	ISO 26623-1

Through-coolant	yes
Setting angle κ	107.5 degrees
Type of product	boring bar holder

Accessories

Intermediate spacer No. 1 Type P06	320610 P06
Toggle lever No. 4 Type P04	320612 P04
High-pressure cooling nozzle (HP) Type 63	320001 63
Toggle lever No. 4 Type P01	320612 P01
Nozzle ring No. 5 Type D07	320613 D07
Clamping screw No. 3 Type P05	320611 P05
Intermediate spacer No. 1 Type P04	320610 P04
Intermediate spacer No. 1 Type P02	320610 P02
Clamp No. 6 Type D07	320614 D07
Tube pin No. 7 Type P04	320618 P04
Tube pin No. 7 Type P05	320618 P05
Clamping screw No. 3 Type P02	320611 P02
Clamping screw No. 3 Type P06	320611 P06
Tube pin No. 7 Type P02	320618 P02
Intermediate spacer No. 1 Type P05	320610 P05
Intermediate spacer No. 1 Type P01	320610 P01
Clamping screw No. 3 Type P01	320611 P01
Toggle lever No. 4 Type P06	320612 P06
Toggle lever No. 4 Type P05	320612 P05
Clamping screw No. 3 Type D07	320611 D07
Tube pin No. 7 Type P01	320618 P01
Tube pin No. 7 Type P06	320618 P06
Toggle lever No. 4 Type P02	320612 P02

